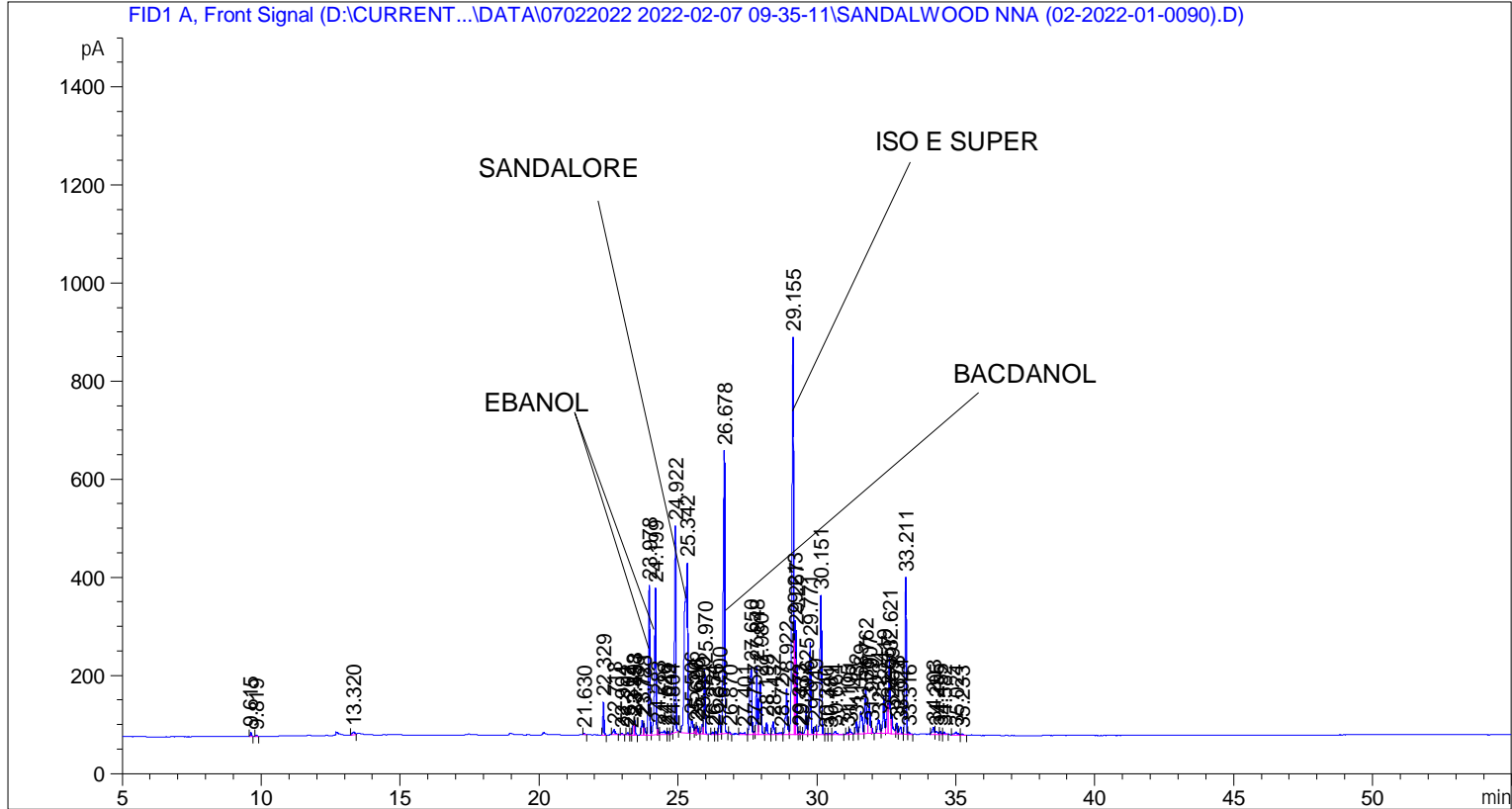


```

=====
Acq. Operator   : SYSTEM                               Seq. Line :    6
Acq. Instrument : BMV_NEW_GC_7820                     Location  : Vial 106
Injection Date  : 07-Feb-22 3:12:22 PM                 Inj       :    1
                                                    Inj Volume: 0.5 µl

Acq. Method     : D:\CURRENT DATA\DATA\07022022 2022-02-07 09-35-11\UNIVERSAL BMV.M
Last changed    : 07-Feb-22 9:35:21 AM by SYSTEM
Analysis Method : C:\CHEM32\2\METHODS\COOLING.M
Last changed    : 03-Mar-22 11:51:21 AM by SYSTEM
                  (modified after loading)

Additional Info : Peak(s) manually integrated
  
```



=====
 Area Percent Report
 =====

```

Sorted By      :      Signal
Multiplier     :      1.0000
Dilution       :      1.0000
Do not use Multiplier & Dilution Factor with ISTDs
  
```

Signal 1: FID1 A, Front Signal

Peak #	RetTime [min]	Type	Width [min]	Area [pA*s]	Height [pA]	Area %
1	9.615	BB	0.0449	20.33269	7.00076	0.08761
2	9.819	BB	0.0464	8.19683	2.78361	0.03532
3	13.320	BV	0.0797	33.38123	5.58531	0.14383
4	21.630	BB	0.0492	8.07911	2.60616	0.03481
5	22.329	BB	0.0465	198.23099	66.94039	0.85414
6	22.718	BB	0.0785	58.09957	10.34588	0.25034
7	22.994	BB	0.0455	8.28316	2.80402	0.03569

Peak #	RetTime [min]	Type	Width [min]	Area [pA*s]	Height [pA]	Area %
8	23.202	BV	0.0498	12.36671	4.02694	0.05329
9	23.314	VV	0.0423	7.12405	2.56980	0.03070
10	23.398	VV	0.0440	79.72282	27.37057	0.34351
11	23.453	VB	0.0447	86.20995	28.98120	0.37146
12	23.721	BV	0.0506	100.84777	29.68998	0.43453
13	23.788	VV	0.0569	90.72560	23.03740	0.39092
14	23.978	VV	0.0508	1014.74902	305.13016	4.37234
15	24.199	VV	0.0536	1089.27527	298.31329	4.69346
16	24.283	VV	0.0451	42.47369	14.11096	0.18301
17	24.528	VV	0.1104	72.65384	8.61001	0.31305
18	24.649	VV	0.0470	21.73339	7.24980	0.09364
19	24.804	VV	0.0362	10.09109	4.49761	0.04348
20	24.922	VB	0.0509	1438.81006	420.25250	6.19953
21	25.342	BV	0.0966	2599.75220	346.38034	11.20179
22	25.506	VV	0.0678	139.90532	29.22928	0.60282
23	25.626	VV	0.0429	34.57729	11.88845	0.14899
24	25.696	VV	0.0766	77.85017	15.76765	0.33544
25	25.890	VV	0.0496	67.67136	19.95441	0.29158
26	25.970	VB	0.0500	420.59799	132.64063	1.81227
27	26.254	BV	0.0534	17.90636	5.30825	0.07715
28	26.376	VV	0.0470	19.62079	6.72442	0.08454
29	26.500	VV	0.0607	153.68903	40.12907	0.66221
30	26.678	VB	0.0561	2132.49878	576.80811	9.18850
31	26.870	BB	0.0426	8.98182	3.31411	0.03870
32	27.401	BV	0.1313	40.41641	4.01953	0.17415
33	27.650	VV	0.0756	772.82599	137.44183	3.32995
34	27.757	VV	0.0428	19.65678	6.78177	0.08470
35	27.848	VV	0.0494	458.72733	139.35162	1.97656
36	27.980	VV	0.0822	569.38629	108.56943	2.45337
37	28.199	VV	0.0605	102.23827	25.09521	0.44052
38	28.432	VV	0.0632	120.58743	26.94359	0.51959
39	28.727	VV	0.1306	46.96819	4.57989	0.20238
40	28.922	VV	0.0698	441.84949	94.07072	1.90384
41	29.155	VV	0.0577	3177.27246	810.64465	13.69021
42	29.213	VV	0.0360	579.37231	232.83127	2.49640
43	29.267	VV	0.0396	557.80487	212.72343	2.40347
44	29.373	VV	0.0554	24.31386	6.53258	0.10476
45	29.432	VV	0.0474	18.87800	5.88949	0.08134
46	29.625	VV	0.0564	219.05585	58.87264	0.94387
47	29.771	VV	0.0558	692.80493	188.82202	2.98515
48	29.949	VV	0.0566	62.76733	16.78494	0.27045
49	30.151	VV	0.0649	1243.01990	284.77728	5.35592
50	30.340	VV	0.0535	10.61765	3.06157	0.04575
51	30.481	VV	0.0554	10.94110	2.93962	0.04714
52	30.664	VB	0.0783	39.49398	6.94990	0.17017
53	31.105	BV	0.0492	12.34895	3.87805	0.05321
54	31.191	VB	0.0607	46.24677	11.07944	0.19927
55	31.432	BV	0.0541	91.02504	25.23601	0.39221
56	31.589	VV	0.0788	270.63434	45.26331	1.16611
57	31.762	VV	0.0590	362.87338	96.13111	1.56355
58	31.907	VV	0.0708	316.99222	61.83023	1.36585
59	31.979	VB	0.0410	35.24266	13.71082	0.15185
60	32.234	BV	0.0700	150.58026	27.87215	0.64882
61	32.419	VV	0.0578	294.34473	75.05213	1.26827

Peak #	RetTime [min]	Type	Width [min]	Area [pA*s]	Height [pA]	Area %
62	32.557	VV	0.0502	201.49023	61.54003	0.86818
63	32.621	VV	0.0518	561.90546	156.86037	2.42113
64	32.699	VV	0.0672	170.36006	36.66489	0.73405
65	32.878	VV	0.0542	77.03374	22.38079	0.33192
66	33.024	VV	0.0684	71.21225	14.73753	0.30684
67	33.211	VV	0.0486	1028.83887	319.15891	4.43305
68	33.316	VB	0.0670	22.55461	4.96622	0.09718
69	34.203	BV	0.0751	69.82441	13.79046	0.30086
70	34.295	VV	0.0837	36.93402	5.62058	0.15914
71	34.455	VV	0.0590	24.67198	6.85592	0.10631
72	34.582	VB	0.0488	13.52240	4.67276	0.05827
73	35.024	BV	0.1110	51.73892	6.09500	0.22293
74	35.233	VB	0.0723	14.54289	3.01582	0.06266

Totals : 2.32084e4 5854.14660

=====
*** End of Report ***