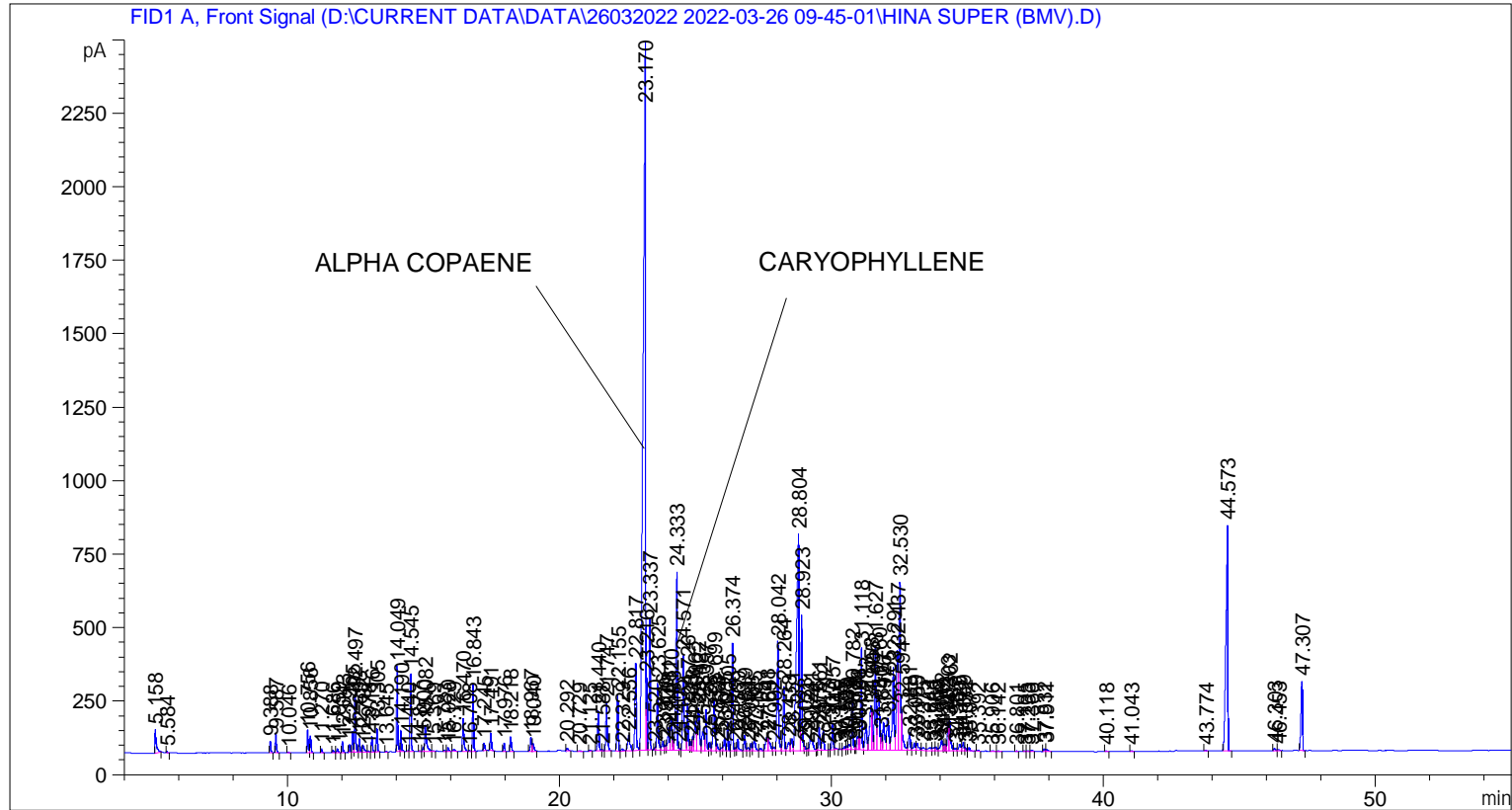


```

=====
Acq. Operator   : SYSTEM                               Seq. Line :    3
Acq. Instrument : BMV_NEW_GC_7820                     Location  : Vial 103
Injection Date  : 26-Mar-22 12:09:29 PM              Inj       :    1
                                                    Inj Volume: 0.5 µl

Acq. Method    : D:\CURRENT DATA\DATA\26032022 2022-03-26 09-45-01\UNIVERSAL BMV.M
Last changed   : 26-Mar-22 9:45:12 AM by SYSTEM
Analysis Method: C:\CHEM32\2\METHODS\COOLING.M
Last changed   : 28-Mar-22 3:07:20 PM by SYSTEM
                (modified after loading)

Additional Info : Peak(s) manually integrated
  
```



=====  
 Area Percent Report  
 =====

```

Sorted By      :      Signal
Multiplier     :      1.0000
Dilution       :      1.0000
Do not use Multiplier & Dilution Factor with ISTDs
  
```

Signal 1: FID1 A, Front Signal

Peak #	RetTime [min]	Type	Width [min]	Area [pA*s]	Height [pA]	Area %
1	5.158	BB	0.0464	270.31168	80.11154	0.38607
2	5.584	BB	0.0323	9.75389	4.50314	0.01393
3	9.388	BB	0.0434	114.79494	40.07937	0.16395
4	9.587	BB	0.0468	196.51643	63.96683	0.28067
5	10.046	BB	0.0466	10.32567	3.38694	0.01475
6	10.756	BV	0.0437	216.70483	77.37170	0.30951
7	10.856	VB	0.0482	177.55852	57.22458	0.25360

Sample Name: HINA SUPER (BMV)

Peak #	RetTime [min]	Type	Width [min]	Area [pA*s]	Height [pA]	Area %
8	11.270	BB	0.0433	33.70378	12.17929	0.04814
9	11.686	BB	0.0427	24.63281	8.79823	0.03518
10	11.859	BB	0.0521	44.03354	12.50104	0.06289
11	12.043	BB	0.0428	104.58011	37.19427	0.14937
12	12.295	BV	0.0410	69.91842	26.31488	0.09986
13	12.405	VV	0.0447	201.09601	69.65240	0.28721
14	12.497	VV	0.0470	585.77527	195.01814	0.83663
15	12.658	VB	0.0446	128.12181	44.52276	0.18299
16	12.792	BB	0.0596	102.24605	23.59373	0.14603
17	12.978	BB	0.0485	12.38118	3.85677	0.01768
18	13.116	BB	0.0459	156.73367	52.35530	0.22385
19	13.305	BB	0.0441	227.59323	80.27065	0.32506
20	13.645	BB	0.0420	6.03478	2.20024	0.00862
21	14.049	BV	0.0438	820.88159	291.77545	1.17242
22	14.190	VB	0.0462	214.48459	71.02345	0.30634
23	14.440	BV	0.0477	8.48747	2.69576	0.01212
24	14.545	VB	0.0456	760.32001	263.73364	1.08592
25	14.877	BV	0.0448	8.60624	3.05725	0.01229
26	15.000	VV	0.0426	43.39619	16.01849	0.06198
27	15.082	VB	0.0638	415.49542	90.14031	0.59343
28	15.369	BV	0.0593	13.26734	3.20702	0.01895
29	15.783	BV	0.0463	13.30605	4.52501	0.01900
30	15.920	VB	0.0479	41.50382	13.47090	0.05928
31	16.129	BB	0.0721	27.01420	5.51917	0.03858
32	16.470	BB	0.0530	391.16724	111.20760	0.55868
33	16.708	BV	0.0433	13.85576	5.00985	0.01979
34	16.843	VB	0.0446	654.79041	227.62277	0.93520
35	17.245	BB	0.0469	78.72068	25.55687	0.11243
36	17.491	BB	0.0485	188.39290	58.61857	0.26907
37	17.976	BB	0.0467	86.24421	29.03228	0.12318
38	18.218	BB	0.0512	167.95314	48.80011	0.23988
39	18.967	BV	0.0553	174.11800	48.00560	0.24868
40	19.040	VB	0.0575	110.56761	27.73588	0.15792
41	20.292	BB	0.0616	46.78098	10.99792	0.06681
42	20.729	BB	0.0730	14.68324	2.71751	0.02097
43	21.125	BB	0.0520	17.13720	4.87708	0.02448
44	21.440	BB	0.0504	457.86014	138.99879	0.65393
45	21.588	BV	0.0548	16.47563	4.49534	0.02353
46	21.747	VB	0.0542	600.98065	165.95673	0.85834
47	22.155	BV	0.0511	626.14648	191.83127	0.89429
48	22.329	VB	0.0807	43.81207	7.22575	0.06257
49	22.556	BV	0.0765	298.16278	52.27519	0.42585
50	22.817	VV	0.0558	1085.41443	295.62668	1.55023
51	23.170	VV	0.0792	1.47441e4	2414.32910	21.05812
52	23.216	VV	0.0293	470.70056	246.22955	0.67227
53	23.337	VB	0.0435	1246.70422	447.14908	1.78059
54	23.520	BV	0.0450	24.61445	8.44518	0.03516
55	23.625	VV	0.0501	764.33685	228.10246	1.09166
56	23.816	VV	0.0637	137.05991	30.34423	0.19575
57	23.900	VV	0.0517	61.61967	18.09355	0.08801
58	24.031	VV	0.0618	323.44879	77.36745	0.46196
59	24.120	VV	0.0532	393.55911	114.11666	0.56210
60	24.183	VV	0.0393	101.87961	39.24989	0.14551
61	24.333	VV	0.0576	2317.54614	606.72583	3.31001

Sample Name: HINA SUPER (BMV)

Peak #	RetTime [min]	Type	Width [min]	Area [pA*s]	Height [pA]	Area %
62	24.405	VV	0.0416	22.18812	8.46521	0.03169
63	24.571	VV	0.0587	1291.76233	322.46280	1.84495
64	24.726	VV	0.0524	572.35535	161.32024	0.81746
65	24.833	VV	0.0491	100.11655	30.68554	0.14299
66	24.913	VV	0.0493	157.71030	48.10166	0.22525
67	25.006	VV	0.0622	429.51059	99.80345	0.61344
68	25.122	VV	0.0818	876.19159	144.41028	1.25141
69	25.280	VV	0.0787	359.22348	64.81844	0.51306
70	25.397	VV	0.0531	489.64679	138.89185	0.69933
71	25.528	VV	0.0540	104.53566	29.77458	0.14930
72	25.699	VV	0.0673	833.16046	172.53429	1.18995
73	25.813	VV	0.0621	98.31590	23.34199	0.14042
74	25.964	VV	0.0514	36.91866	10.66715	0.05273
75	26.085	VV	0.0636	183.10603	43.07114	0.26152
76	26.205	VV	0.0477	302.81573	98.88668	0.43249
77	26.374	VV	0.0573	1294.79834	366.10980	1.84928
78	26.479	VV	0.0567	46.45403	12.13173	0.06635
79	26.569	VV	0.0576	158.51154	40.59409	0.22639
80	26.819	VV	0.0525	183.05952	52.78812	0.26145
81	26.954	VV	0.0631	52.41261	12.19368	0.07486
82	27.063	VV	0.0484	86.44516	26.23998	0.12346
83	27.185	VV	0.0741	225.15309	41.61870	0.32157
84	27.405	VV	0.0729	47.21214	9.68807	0.06743
85	27.648	VV	0.0709	247.95067	47.53490	0.35413
86	27.691	VV	0.0737	266.13785	47.27132	0.38011
87	27.902	VV	0.0729	61.34380	12.36945	0.08761
88	28.042	VV	0.0604	1448.78992	372.55920	2.06922
89	28.264	VV	0.0518	806.06378	219.65527	1.15125
90	28.438	VV	0.0841	166.43347	27.30284	0.23771
91	28.551	VV	0.0681	188.00322	41.34109	0.26851
92	28.804	VV	0.0889	4852.12207	735.86682	6.92999
93	28.923	VV	0.0516	1558.71008	458.94543	2.22621
94	29.033	VV	0.0461	49.17615	15.44408	0.07024
95	29.121	VV	0.0504	30.34302	8.75914	0.04334
96	29.241	VV	0.1053	338.30396	42.74195	0.48318
97	29.476	VV	0.0432	21.67639	7.60934	0.03096
98	29.561	VV	0.0573	291.22714	78.43633	0.41594
99	29.712	VV	0.0667	312.25269	66.56880	0.44597
100	29.913	VV	0.0408	5.98430	2.33936	0.00855
101	30.057	VV	0.0526	305.69467	90.11594	0.43661
102	30.146	VB	0.0573	23.10516	6.08101	0.03300
103	30.355	BV	0.0408	7.13711	3.11257	0.01019
104	30.505	VV	0.0625	51.59555	11.69436	0.07369
105	30.582	VV	0.0436	38.40336	12.58332	0.05485
106	30.679	VV	0.0691	83.64466	17.70734	0.11946
107	30.782	VV	0.0508	607.15991	182.34454	0.86717
108	30.878	VV	0.0421	38.90040	13.73025	0.05556
109	30.968	VV	0.0565	183.09566	46.90857	0.26150
110	31.021	VV	0.0283	90.01624	43.21375	0.12856
111	31.118	VV	0.0564	1290.09729	346.93909	1.84257
112	31.283	VV	0.0685	404.56601	86.55225	0.57782
113	31.458	VV	0.0664	698.65387	152.54330	0.99784
114	31.505	VV	0.0421	395.17700	139.46553	0.56441
115	31.627	VV	0.0587	1380.95422	345.28015	1.97233

Sample Name: HINA SUPER (BMV)

Peak #	RetTime [min]	Type	Width [min]	Area [pA*s]	Height [pA]	Area %
116	31.760	VV	0.0763	1062.13074	186.77191	1.51698
117	31.840	VV	0.0450	174.17297	56.46933	0.24876
118	31.926	VV	0.0703	461.43619	94.01983	0.65904
119	32.085	VV	0.0837	630.05884	110.17876	0.89987
120	32.291	VV	0.0633	1263.17456	281.83105	1.80412
121	32.437	VV	0.0571	1397.24072	338.71698	1.99559
122	32.530	VV	0.0594	2277.95947	573.09869	3.25347
123	32.594	VV	0.0573	554.14410	139.52396	0.79145
124	32.881	VV	0.0633	264.41367	60.15303	0.37765
125	33.059	VV	0.0635	118.52937	25.85569	0.16929
126	33.155	VV	0.0776	142.67171	25.38978	0.20377
127	33.375	VV	0.0933	78.25662	10.22272	0.11177
128	33.644	VV	0.1032	90.36057	11.07261	0.12906
129	33.786	VV	0.0746	62.09897	11.04786	0.08869
130	33.862	VV	0.0618	52.07983	11.96491	0.07438
131	34.062	VV	0.0748	186.59517	35.20102	0.26650
132	34.141	VV	0.0540	86.14625	23.90611	0.12304
133	34.202	VV	0.0479	72.97896	20.79566	0.10423
134	34.303	VV	0.0484	334.07932	96.47011	0.47715
135	34.362	VV	0.0550	406.76172	103.11608	0.58095
136	34.585	VV	0.0830	55.69101	8.78172	0.07954
137	34.729	VV	0.0678	108.70451	23.13325	0.15526
138	34.859	VV	0.0649	137.55540	27.70193	0.19646
139	34.932	VV	0.0493	37.43825	12.02861	0.05347
140	35.071	VB	0.0602	50.76780	12.28744	0.07251
141	35.392	BB	0.0559	13.05186	3.18206	0.01864
142	35.906	BV	0.0909	15.89245	2.41079	0.02270
143	36.142	VB	0.0468	11.24442	3.56185	0.01606
144	36.801	BB	0.0480	6.58525	2.13469	0.00941
145	37.105	BV	0.0471	7.45318	2.47681	0.01064
146	37.233	VV	0.0556	13.01942	3.12601	0.01859
147	37.366	VB	0.0627	19.10647	4.48702	0.02729
148	37.832	BV	0.0551	36.85202	10.21929	0.05263
149	37.911	VB	0.0826	53.06164	8.41540	0.07578
150	40.118	BB	0.0500	8.05754	2.41049	0.01151
151	41.043	BB	0.0492	10.44785	2.95562	0.01492
152	43.774	BB	0.0574	11.29400	2.96747	0.01613
153	44.573	BB	0.0694	3841.92627	767.00195	5.48719
154	46.303	BV	0.0595	28.92777	7.42533	0.04132
155	46.453	VB	0.0614	16.42447	4.21865	0.02346
156	47.307	BB	0.0578	904.75183	235.38612	1.29220

Totals : 7.00163e4 1.63507e4

=====  
 \*\*\* End of Report \*\*\*