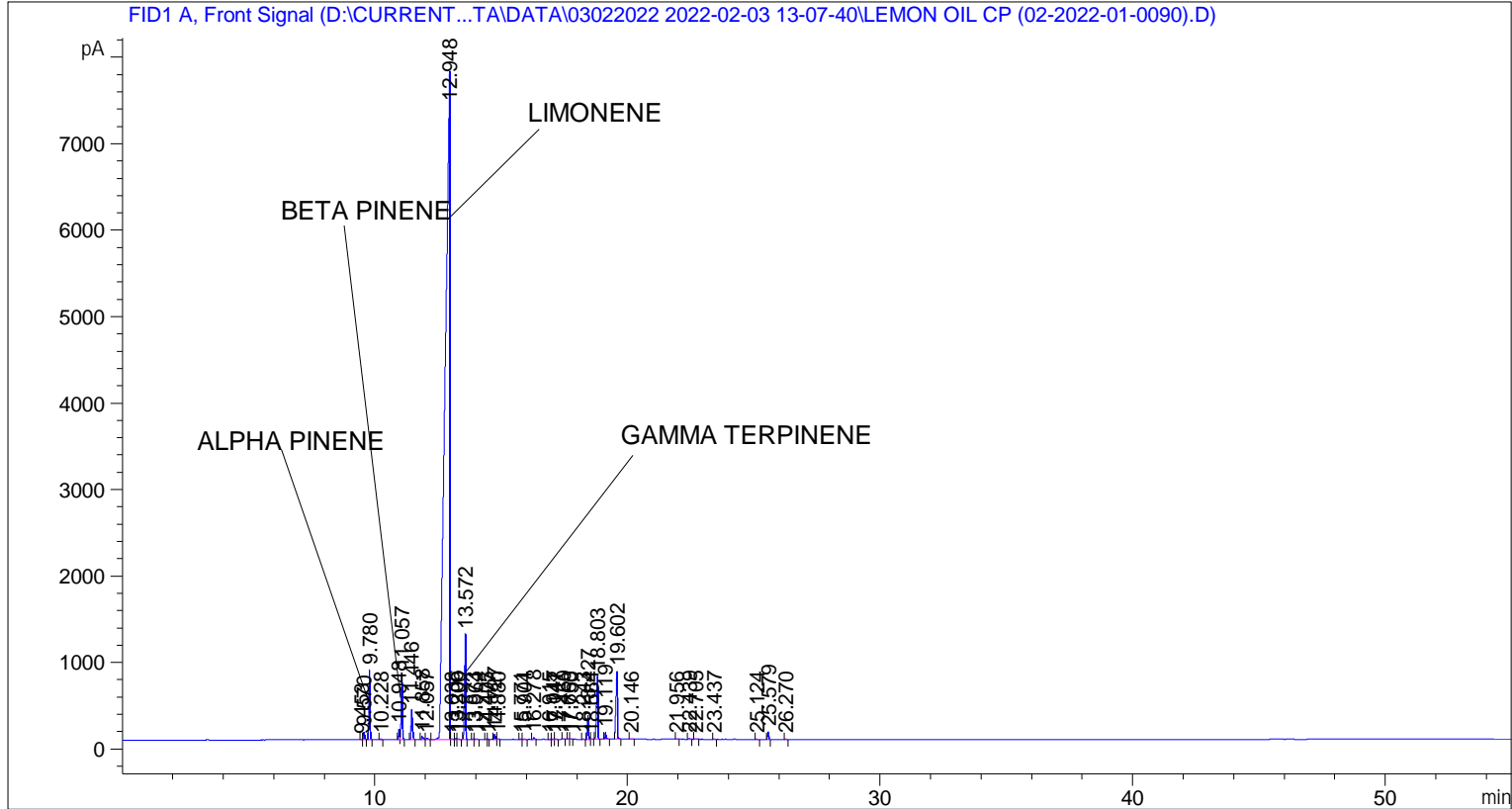


```

=====
Acq. Operator   : SYSTEM                               Seq. Line :    3
Acq. Instrument : BMV_NEW_GC_7820                     Location  : Vial 103
Injection Date  : 03-Feb-22 3:29:57 PM                Inj       :    1
                                                    Inj Volume: 0.5 µl

Acq. Method     : D:\CURRENT DATA\DATA\03022022 2022-02-03 13-07-40\UNIVERSAL BMV.M
Last changed    : 03-Feb-22 1:07:52 PM by SYSTEM
Analysis Method : C:\CHEM32\2\METHODS\COOLING.M
Last changed    : 02-Mar-22 4:09:30 PM by SYSTEM
                (modified after loading)

Additional Info : Peak(s) manually integrated
  
```



=====
 Area Percent Report
 =====

```

Sorted By       :      Signal
Multiplier      :      1.0000
Dilution        :      1.0000
Do not use Multiplier & Dilution Factor with ISTDs
  
```

Signal 1: FID1 A, Front Signal

Peak #	RetTime [min]	Type	Width [min]	Area [pA*s]	Height [pA]	Area %
1	9.453	BV	0.0402	5.20720	2.01028	0.00453
2	9.570	VB	0.0433	239.04657	86.39654	0.20816
3	9.780	BB	0.0440	2275.13745	804.74976	1.98119
4	10.228	BB	0.0505	35.57737	10.49644	0.03098
5	10.948	BV	0.0493	387.58154	124.42384	0.33751
6	11.057	VB	0.0498	2364.47119	750.41522	2.05898
7	11.446	BB	0.0597	1329.19177	346.94971	1.15746

Peak #	RetTime [min]	Type	Width [min]	Area [pA*s]	Height [pA]	Area %
8	11.858	BV	0.0675	156.33096	33.49336	0.13613
9	12.057	VB	0.0667	70.88671	15.11614	0.06173
10	12.948	BV	0.1505	9.61961e4	7711.65625	83.76757
11	13.038	VB	0.0541	18.58227	4.69916	0.01618
12	13.206	BV	0.0426	36.52155	13.05092	0.03180
13	13.300	VB	0.0433	13.67423	4.94115	0.01191
14	13.572	BB	0.0494	3889.00610	1212.88403	3.38655
15	13.873	BV	0.0423	16.19845	6.04201	0.01411
16	13.964	VB	0.0846	35.67737	5.81710	0.03107
17	14.405	BV	0.0438	18.74118	6.87987	0.01632
18	14.477	VB	0.0424	6.76664	2.36708	0.00589
19	14.727	BV	0.0491	192.97545	59.10908	0.16804
20	14.880	VB	0.0569	19.94838	4.95813	0.01737
21	15.771	BV	0.0453	17.46870	5.94737	0.01521
22	15.904	VB	0.0496	15.72243	4.62949	0.01369
23	16.278	BB	0.0508	51.71700	15.54693	0.04504
24	16.915	BB	0.0412	4.84370	1.93310	0.00422
25	17.047	BV	0.0476	31.53598	10.05578	0.02746
26	17.141	VB	0.0575	23.21568	6.37137	0.02022
27	17.460	BB	0.0518	24.14780	6.89769	0.02103
28	17.668	BV	0.0514	10.00149	3.11687	0.00871
29	17.750	VB	0.0497	15.73179	5.00016	0.01370
30	18.243	BB	0.0457	16.43487	5.52014	0.01431
31	18.427	BB	0.0519	882.28589	271.40121	0.76829
32	18.564	BB	0.0561	19.12235	4.84261	0.01665
33	18.803	BB	0.0493	2660.35767	733.55920	2.31664
34	19.119	BB	0.0513	246.95465	73.37865	0.21505
35	19.602	BB	0.0550	3079.18164	781.24146	2.68135
36	20.146	BB	0.0766	30.98135	5.77726	0.02698
37	21.956	BB	0.0545	20.58581	5.51927	0.01793
38	22.439	BB	0.0615	37.05944	9.09916	0.03227
39	22.705	BB	0.0661	33.92555	7.45088	0.02954
40	23.437	BB	0.0459	26.03393	8.95574	0.02267
41	25.124	BB	0.0623	12.27791	2.90399	0.01069
42	25.579	BB	0.0474	253.71693	85.98660	0.22094
43	26.270	BB	0.0541	15.99803	4.54278	0.01393

Totals : 1.14837e5 1.32661e4

=====
 *** End of Report ***