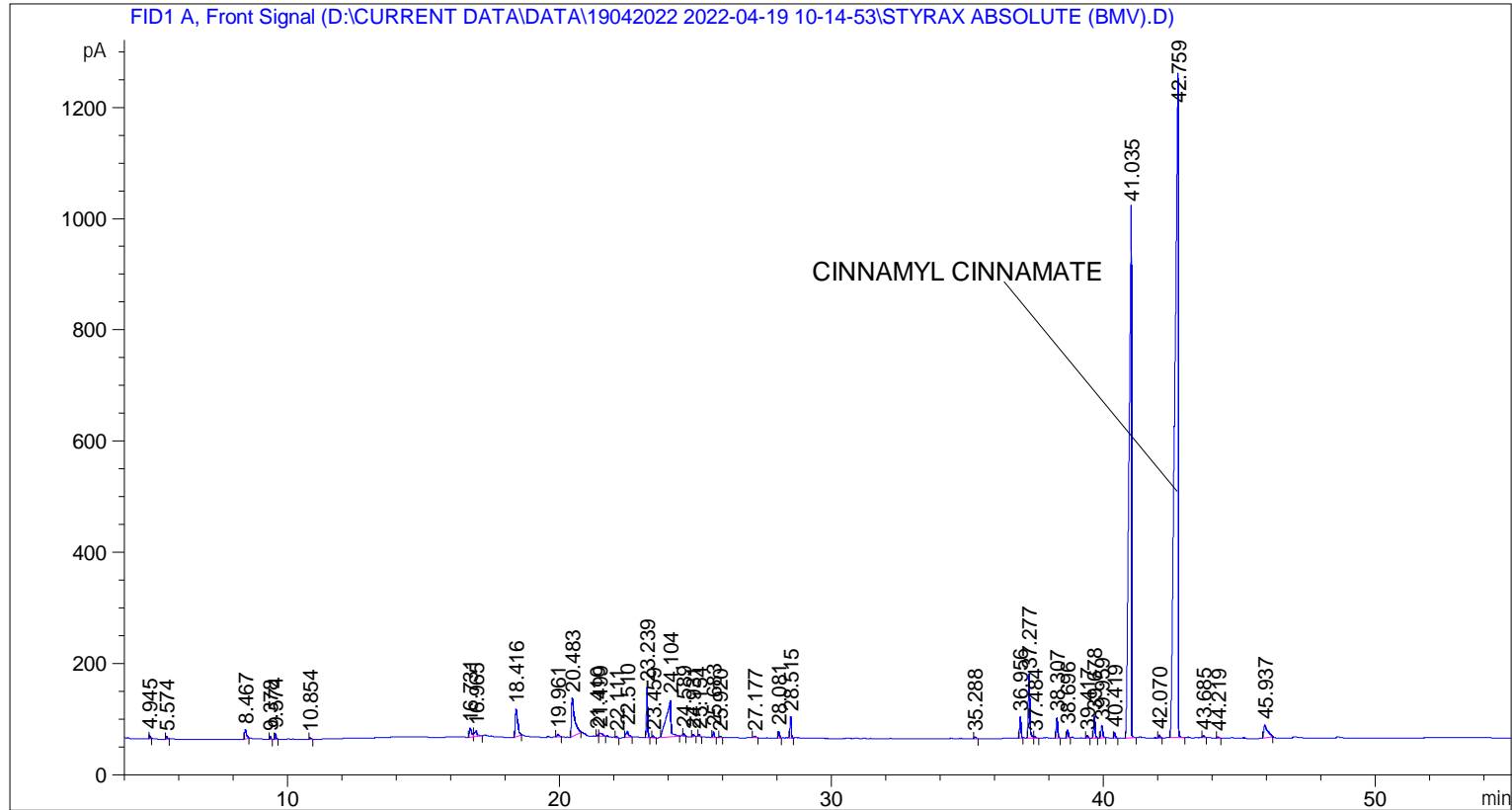


```

=====
Acq. Operator   : SYSTEM                               Seq. Line :    4
Acq. Instrument : BMV_NEW_GC_7820                     Location  : Vial 104
Injection Date  : 19-Apr-22 1:46:29 PM                Inj       :    1
                                                    Inj Volume: 0.5 µl

Acq. Method     : D:\CURRENT DATA\DATA\19042022 2022-04-19 10-14-53\UNIVERSAL.BMV.M
Last changed    : 19-Apr-22 10:14:53 AM by SYSTEM
Analysis Method : C:\CHEM32\2\METHODS\COOLING.M
Last changed    : 17-May-22 10:30:24 AM by SYSTEM
                (modified after loading)

Additional Info : Peak(s) manually integrated
  
```



=====
 Area Percent Report
 =====

```

Sorted By      :      Signal
Multiplier     :      1.0000
Dilution       :      1.0000
Do not use Multiplier & Dilution Factor with ISTDs
  
```

Signal 1: FID1 A, Front Signal

Peak #	RetTime [min]	Type	Width [min]	Area [pA*s]	Height [pA]	Area %
1	4.945	BB	0.0339	17.16183	6.93454	0.08307
2	5.574	BB	0.0475	16.96694	5.14045	0.08212
3	8.467	BB	0.0639	75.39492	16.93387	0.36492
4	9.378	BB	0.0457	15.07897	5.21473	0.07298
5	9.574	BB	0.0454	30.28814	10.26627	0.14660
6	10.854	BB	0.0481	8.48199	2.73759	0.04105
7	16.731	BV	0.0731	86.13777	16.45667	0.41692

Sample Name: STYRAX ABSOLUTE (BMV)

Peak #	RetTime [min]	Type	Width [min]	Area [pA*s]	Height [pA]	Area %
8	16.965	VB	0.0916	74.05817	10.21644	0.35845
9	18.416	BB	0.0843	302.63373	50.22528	1.46480
10	19.961	BB	0.0691	26.74054	5.28303	0.12943
11	20.483	BB	0.1032	543.63263	69.54424	2.63128
12	21.410	BV	0.0392	6.11399	2.62362	0.02959
13	21.499	VB	0.1085	44.96821	5.32598	0.21765
14	22.111	BB	0.0445	6.34966	2.27804	0.03073
15	22.510	BB	0.0851	74.93258	11.63678	0.36269
16	23.239	BB	0.0484	284.68607	91.23293	1.37793
17	23.459	BB	0.0502	11.92422	3.64546	0.05772
18	24.104	BB	0.1506	820.70880	66.22002	3.97238
19	24.589	BB	0.0517	17.54484	4.90570	0.08492
20	24.931	BB	0.0560	17.45964	4.84507	0.08451
21	25.154	BB	0.0463	12.86837	4.25279	0.06229
22	25.683	BB	0.0500	34.17686	10.49405	0.16542
23	25.920	BB	0.0494	8.61702	2.61605	0.04171
24	27.177	BB	0.0747	15.75668	2.88726	0.07627
25	28.081	BB	0.0516	40.00402	12.08124	0.19363
26	28.515	BB	0.0479	122.05369	38.55478	0.59076
27	35.288	BB	0.0585	13.18504	3.45695	0.06382
28	36.956	BB	0.0537	132.39641	38.93837	0.64082
29	37.277	BB	0.0556	447.44281	114.45514	2.16570
30	37.484	BB	0.0609	12.15173	2.84047	0.05882
31	38.307	BB	0.0537	131.60129	36.84651	0.63697
32	38.696	BB	0.0518	51.62373	14.08629	0.24987
33	39.417	BB	0.0496	16.25367	4.91104	0.07867
34	39.678	BB	0.0536	136.52052	39.20379	0.66078
35	39.959	BB	0.0712	99.88918	22.32455	0.48348
36	40.419	BB	0.0547	34.97695	9.78924	0.16929
37	41.035	BB	0.0774	5923.07373	954.65515	28.66874
38	42.070	BB	0.0515	17.19493	5.21617	0.08323
39	42.759	BB	0.1104	1.06823e4	1193.25439	51.70430
40	43.685	BB	0.0650	13.81289	3.16033	0.06686
41	44.219	BB	0.0575	10.65418	2.79231	0.05157
42	45.937	BB	0.1266	222.56487	22.64937	1.07725

Totals : 2.06604e4 2931.13298

=====
*** End of Report ***