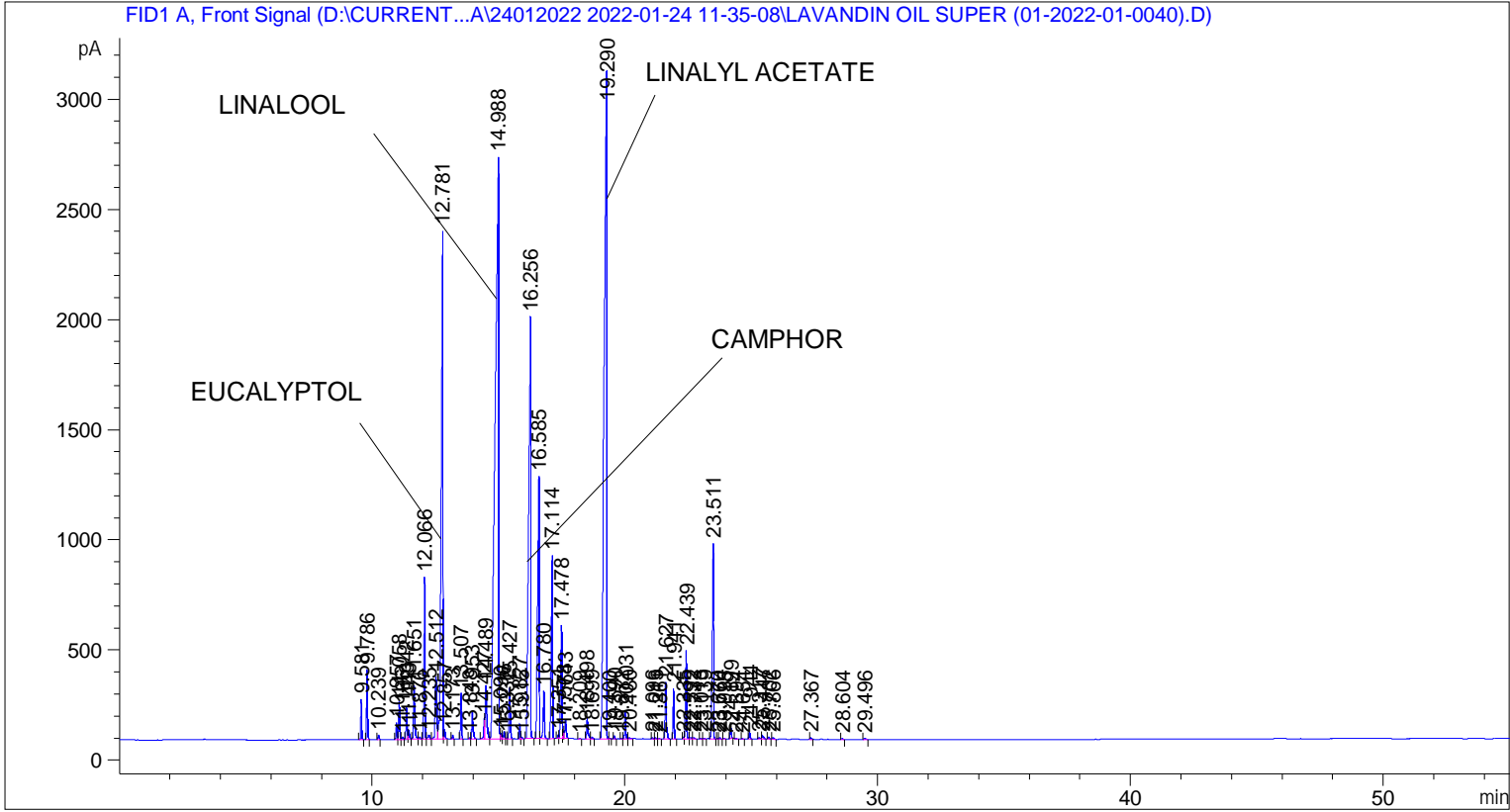


```

=====
Acq. Operator   : SYSTEM                               Seq. Line :    4
Acq. Instrument : BMV_NEW_GC_7820                     Location  : Vial 104
Injection Date  : 24-Jan-22 3:00:48 PM                 Inj       :    1
                                                    Inj Volume: 0.5 µl

Acq. Method     : D:\CURRENT DATA\DATA\24012022 2022-01-24 11-35-08\UNIVERSAL BMV.M
Last changed    : 24-Jan-22 11:35:18 AM by SYSTEM
Analysis Method : C:\CHEM32\2\METHODS\COOLING.M
Last changed    : 04-Mar-22 10:37:57 AM by SYSTEM
                (modified after loading)

Additional Info : Peak(s) manually integrated
  
```



Area Percent Report

```

Sorted By      : Signal
Multiplier     : 1.0000
Dilution       : 1.0000
Do not use Multiplier & Dilution Factor with ISTDs
  
```

Signal 1: FID1 A, Front Signal

Peak #	RetTime [min]	Type	Width [min]	Area [pA*s]	Height [pA]	Area %
1	9.581	BB	0.0408	485.02347	183.45218	0.48992
2	9.786	BB	0.0422	853.77081	319.30273	0.86239
3	10.239	BB	0.0451	56.10331	19.16715	0.05667
4	10.957	BV	0.0424	208.56148	77.54537	0.21067
5	11.058	VB	0.0440	481.94565	170.38226	0.48681
6	11.196	BB	0.0460	34.80358	11.61023	0.03515
7	11.342	BV	0.0432	409.53629	143.80441	0.41367

Peak #	RetTime [min]	Type	Width [min]	Area [pA*s]	Height [pA]	Area %
8	11.449	VB	0.0478	132.90276	42.12362	0.13424
9	11.651	BV	0.0596	907.80048	242.81770	0.91696
10	11.876	VV	0.0501	27.66863	8.48058	0.02795
11	12.066	VV	0.0460	2141.85474	734.44916	2.16347
12	12.235	VV	0.0706	85.14729	18.88072	0.08601
13	12.512	VV	0.0705	1247.00159	282.37506	1.25959
14	12.781	VV	0.0613	1.05491e4	2308.87085	10.65552
15	12.857	VB	0.0451	133.41153	45.64474	0.13476
16	13.173	BB	0.0422	44.44841	16.10642	0.04490
17	13.507	BB	0.0428	570.24976	209.06030	0.57601
18	13.848	BV	0.0476	15.32235	5.17193	0.01548
19	13.953	VB	0.0548	449.75623	122.57122	0.45430
20	14.427	BV	0.0435	258.31677	92.59121	0.26092
21	14.489	VV	0.0670	1104.20459	242.87355	1.11535
22	14.988	VV	0.1171	2.51497e4	2642.05664	25.40358
23	15.090	VV	0.0491	80.87796	24.11562	0.08169
24	15.216	VV	0.0526	117.26403	32.91112	0.11845
25	15.332	VV	0.0417	9.74483	3.47902	0.00984
26	15.427	VB	0.0576	838.76056	229.89122	0.84723
27	15.827	BV	0.0458	194.91740	67.31869	0.19688
28	15.915	VB	0.0457	23.59277	8.16937	0.02383
29	16.256	BB	0.0719	1.06384e4	1913.22937	10.74580
30	16.585	BV	0.0587	5061.79443	1187.47009	5.11288
31	16.780	VB	0.0541	764.20563	216.70586	0.77192
32	17.114	BB	0.0542	3079.60864	830.91028	3.11069
33	17.351	BV	0.0423	46.48941	16.80335	0.04696
34	17.478	VV	0.0516	1829.86511	513.73663	1.84833
35	17.578	VV	0.0421	89.76879	31.61890	0.09067
36	17.643	VB	0.0575	327.59698	84.04650	0.33090
37	18.209	BB	0.0450	5.80827	2.11971	0.00587
38	18.498	BV	0.0572	359.42545	94.77630	0.36305
39	18.699	VB	0.0603	29.55559	7.45109	0.02985
40	19.290	BV	0.0980	2.30375e4	3019.14404	23.27001
41	19.400	VB	0.0530	9.61528	2.60740	0.00971
42	19.590	BB	0.0411	37.32971	13.98833	0.03771
43	19.872	BV	0.0406	9.74091	3.71922	0.00984
44	20.031	VB	0.0448	366.07693	126.53807	0.36977
45	20.180	BB	0.0677	33.08446	7.18961	0.03342
46	21.096	BV	0.0505	21.18386	6.42310	0.02140
47	21.213	VB	0.0516	20.86097	6.31123	0.02107
48	21.361	BB	0.0418	5.30674	1.94440	0.00536
49	21.627	BB	0.0492	864.68048	257.22263	0.87341
50	21.941	BB	0.0458	667.73413	230.45662	0.67447
51	22.335	BV	0.0402	23.63533	8.83599	0.02387
52	22.439	VV	0.0479	1232.88196	400.27881	1.24533
53	22.592	VV	0.0720	26.07826	4.99160	0.02634
54	22.732	VB	0.0730	30.19065	6.18398	0.03050
55	23.013	BV	0.0467	12.21956	4.11357	0.01234
56	23.139	VB	0.0492	13.88445	4.35690	0.01402
57	23.511	BB	0.0512	3207.62891	886.19910	3.24000
58	23.670	BV	0.0488	7.84312	2.55346	0.00792
59	23.764	VB	0.0456	18.88141	6.55325	0.01907
60	23.935	BB	0.0464	7.44572	2.52589	0.00752
61	24.199	BB	0.0457	143.59943	48.34819	0.14505

Peak #	RetTime [min]	Type	Width [min]	Area [pA*s]	Height [pA]	Area %
62	24.394	BB	0.0433	7.49643	2.62423	0.00757
63	24.654	BB	0.0455	9.99204	3.37890	0.01009
64	24.944	BB	0.0481	98.57013	31.03434	0.09956
65	25.317	BV	0.0658	37.80966	8.04784	0.03819
66	25.447	VB	0.0670	81.57647	17.00012	0.08240
67	25.702	BB	0.0478	32.18883	10.50073	0.03251
68	25.866	BB	0.0551	29.02032	8.04126	0.02931
69	27.367	BB	0.0501	20.64804	6.01308	0.02086
70	28.604	BB	0.0485	14.27832	4.43762	0.01442
71	29.496	BB	0.0663	27.48459	6.24558	0.02776

Totals : 9.90008e4 1.83519e4

=====
*** End of Report ***