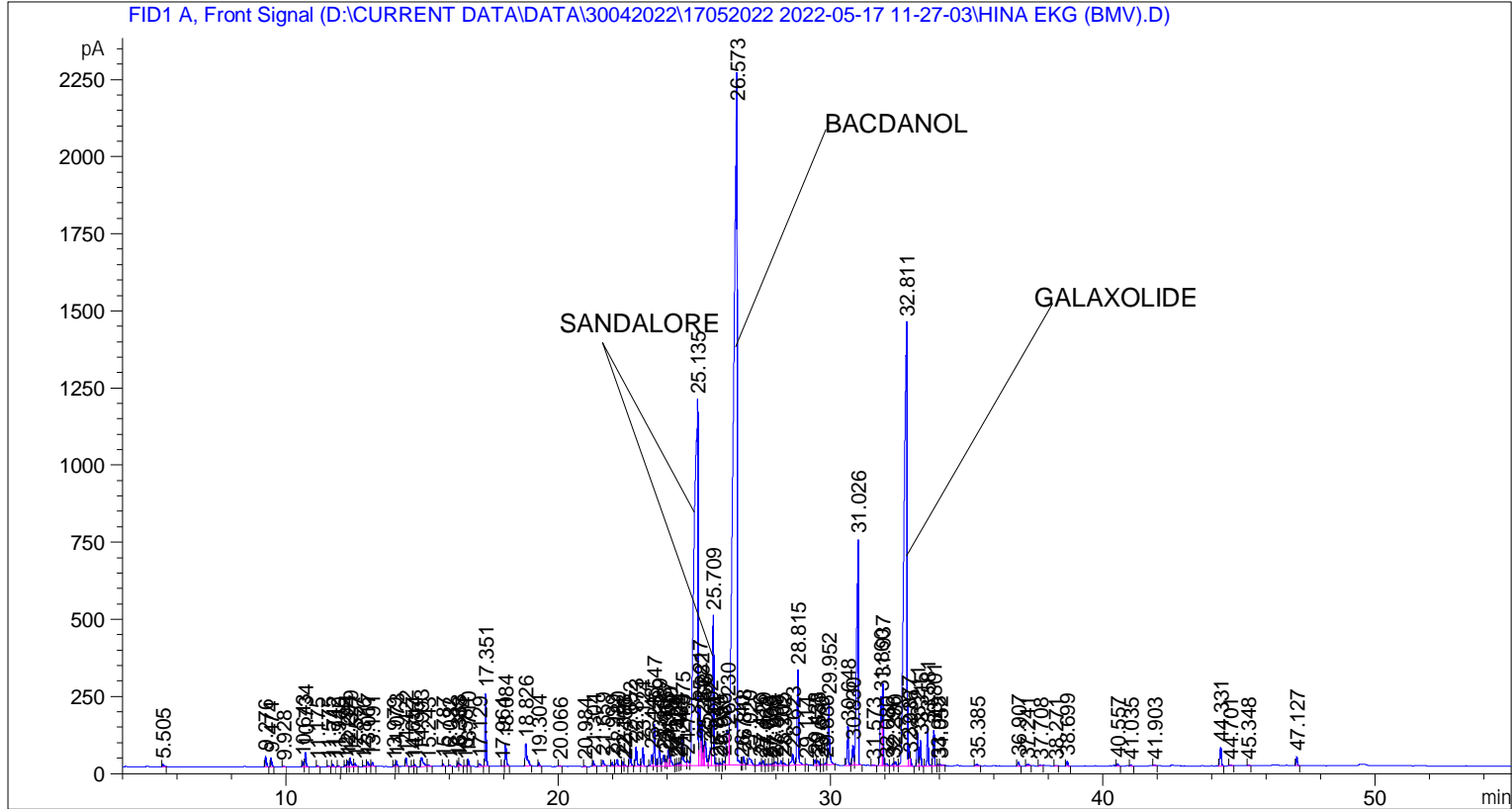


```

=====
Acq. Operator   : SYSTEM                               Seq. Line :    2
Acq. Instrument : BMV_NEW_GC_7820                     Location  : Vial 102
Injection Date  : 17-May-22 12:45:44 PM                Inj       :    1
                                                    Inj Volume: 0.5 µl

Acq. Method     : D:\CURRENT DATA\DATA\30042022\17052022 2022-05-17 11-27-03\UNIVERSAL BMV.M
Last changed    : 17-May-22 11:27:03 AM by SYSTEM
Analysis Method : C:\CHEM32\2\METHODS\COOLING.M
Last changed    : 23-May-22 2:30:32 PM by SYSTEM
                  (modified after loading)

Additional Info : Peak(s) manually integrated
  
```



=====
 Area Percent Report
 =====

```

Sorted By      : Signal
Multiplier     : 1.0000
Dilution      : 1.0000
Do not use Multiplier & Dilution Factor with ISTDs
  
```

Signal 1: FID1 A, Front Signal

Peak #	RetTime [min]	Type	Width [min]	Area [pA*s]	Height [pA]	Area %
1	5.505	BB	0.0549	27.93042	7.25270	0.04371
2	9.276	BB	0.0479	104.03840	33.83891	0.16280
3	9.474	BB	0.0484	91.85402	28.67131	0.14374
4	9.928	BB	0.0520	7.93855	2.31488	0.01242
5	10.643	BV	0.0440	47.44212	16.75415	0.07424
6	10.734	VB	0.0488	145.49321	46.16591	0.22767
7	11.175	BB	0.0462	9.81299	3.16660	0.01536

Sample Name: HINA EKG (BMV)

Peak #	RetTime [min]	Type	Width [min]	Area [pA*s]	Height [pA]	Area %
8	11.575	BB	0.0444	9.60913	3.35175	0.01504
9	11.742	BB	0.0460	20.95830	7.19821	0.03280
10	11.940	BB	0.0457	12.61261	4.36333	0.01974
11	12.192	BV	0.0438	16.45155	5.85861	0.02574
12	12.291	VV	0.0459	55.46842	18.56809	0.08680
13	12.379	VB	0.0545	100.83352	27.02607	0.15779
14	12.557	BB	0.0549	39.77235	10.81174	0.06224
15	12.876	BV	0.0548	12.14714	3.31461	0.01901
16	13.017	VV	0.0618	67.53263	16.48863	0.10568
17	13.191	VB	0.0518	44.05186	12.58718	0.06893
18	13.979	BV	0.0445	16.19903	5.47289	0.02535
19	14.073	VB	0.0458	49.13991	16.98345	0.07690
20	14.422	BB	0.0441	79.17893	27.88522	0.12390
21	14.657	BV	0.0434	7.23581	2.68618	0.01132
22	14.744	VB	0.0449	19.33042	6.64415	0.03025
23	14.993	BB	0.0786	178.13748	30.31550	0.27876
24	15.243	BB	0.0594	21.13737	4.99363	0.03308
25	15.787	BB	0.0469	24.42851	7.92996	0.03823
26	16.032	BB	0.0552	14.41095	3.98103	0.02255
27	16.333	BV	0.0417	35.53235	13.08325	0.05560
28	16.388	VB	0.0642	38.72121	8.18393	0.06059
29	16.584	BB	0.0386	3.81382	1.55728	0.00597
30	16.710	BB	0.0446	70.74242	23.88501	0.11070
31	17.129	BB	0.0790	45.82034	8.49136	0.07170
32	17.351	BB	0.0460	686.75153	235.69449	1.07466
33	17.964	BV	0.0483	7.44222	2.39182	0.01165
34	18.084	VB	0.0501	256.69147	76.50058	0.40168
35	18.826	BB	0.0701	358.58429	73.29320	0.56113
36	19.304	BB	0.0436	33.64217	12.02590	0.05264
37	20.066	BB	0.0525	12.85439	3.70235	0.02012
38	20.984	BB	0.0447	7.31883	2.53096	0.01145
39	21.304	BB	0.0547	61.27865	16.72404	0.09589
40	21.659	BB	0.0668	84.93282	18.76890	0.13291
41	21.999	BV	0.0486	39.48701	12.93676	0.06179
42	22.180	VB	0.0663	110.43783	23.30690	0.17282
43	22.388	BV	0.0485	49.59026	15.83193	0.07760
44	22.456	VB	0.0487	17.98511	5.42336	0.02814
45	22.652	BB	0.0550	199.82611	55.49735	0.31270
46	22.873	BB	0.0553	246.52821	64.94779	0.38578
47	23.124	BB	0.0538	208.96292	59.72145	0.32699
48	23.448	BV	0.0508	122.79872	36.95583	0.19216
49	23.547	VV	0.0475	426.69681	136.55428	0.66771
50	23.729	VV	0.0525	213.55380	63.03568	0.33418
51	23.888	VV	0.0743	170.37813	34.09799	0.26661
52	23.965	VV	0.0505	71.96060	21.27471	0.11261
53	24.057	VV	0.0527	195.24965	53.29676	0.30553
54	24.130	VB	0.0621	151.28067	33.87785	0.23673
55	24.324	BV	0.0481	19.40753	6.10863	0.03037
56	24.402	VV	0.0483	31.27230	9.29416	0.04894
57	24.489	VV	0.0527	36.99720	10.60487	0.05789
58	24.575	VV	0.0614	366.50186	86.55563	0.57352
59	24.757	VV	0.0756	101.40941	18.31358	0.15869
60	25.135	VV	0.1206	1.15594e4	1186.81506	18.08859
61	25.217	VV	0.0486	592.43530	189.02806	0.92707

Peak #	RetTime [min]	Type	Width [min]	Area [pA*s]	Height [pA]	Area %
62	25.282	VV	0.0459	434.14841	145.31587	0.67937
63	25.356	VV	0.0384	167.36407	66.49429	0.26190
64	25.408	VV	0.0653	398.83014	79.80624	0.62411
65	25.602	VV	0.0558	216.12427	56.25290	0.33820
66	25.709	VV	0.0553	1843.49121	485.37042	2.88477
67	25.844	VV	0.0567	28.29844	6.77347	0.04428
68	25.955	VV	0.0510	31.89678	9.54960	0.04991
69	26.086	VV	0.0600	53.24229	13.81602	0.08332
70	26.230	VV	0.0815	611.63153	112.38837	0.95711
71	26.573	VV	0.1103	1.99192e4	2250.07983	31.17042
72	26.740	VV	0.0401	18.86232	6.64856	0.02952
73	26.818	VB	0.0527	95.58849	26.76524	0.14958
74	27.020	BV	0.1044	177.44594	22.16574	0.27767
75	27.416	VV	0.0645	38.67321	8.92837	0.06052
76	27.529	VV	0.0515	55.56298	16.42438	0.08695
77	27.663	VV	0.0507	14.94772	4.28568	0.02339
78	27.790	VV	0.0717	18.81238	3.80167	0.02944
79	27.905	VV	0.0480	26.56286	7.75617	0.04157
80	27.998	VV	0.0768	59.79199	10.60779	0.09356
81	28.205	VV	0.0729	78.71362	15.08802	0.12317
82	28.302	VV	0.0658	35.51446	6.70133	0.05557
83	28.623	VV	0.0782	196.95912	35.78481	0.30821
84	28.815	VB	0.0588	1133.58325	308.69116	1.77388
85	29.114	BB	0.0518	8.74580	2.32786	0.01369
86	29.438	BV	0.0563	66.47023	18.75533	0.10402
87	29.533	VV	0.0687	83.28905	16.55121	0.13033
88	29.670	VV	0.0439	9.78576	3.18430	0.01531
89	29.836	VV	0.0468	19.38769	5.83336	0.03034
90	29.952	VB	0.0597	869.47052	208.29475	1.36058
91	30.648	BB	0.0504	413.88736	125.84687	0.64767
92	30.830	BV	0.0488	216.97961	65.28069	0.33954
93	31.026	VB	0.0635	3484.66797	732.96838	5.45295
94	31.573	BB	0.0557	9.92877	2.71110	0.01554
95	31.860	BV	0.0515	830.64136	222.65671	1.29982
96	31.937	VV	0.0504	879.09808	266.75339	1.37565
97	32.080	VV	0.0686	37.60220	7.12343	0.05884
98	32.296	VV	0.0499	23.26910	6.48388	0.03641
99	32.380	VV	0.0736	73.80247	14.70394	0.11549
100	32.811	VV	0.0998	1.10743e4	1438.85730	17.32959
101	32.877	VV	0.0420	198.41827	72.35883	0.31049
102	32.936	VB	0.0484	81.69595	26.88743	0.12784
103	33.211	BV	0.0516	329.19028	104.87662	0.51513
104	33.315	VB	0.0512	268.93088	84.24833	0.42083
105	33.581	BB	0.0516	408.85123	123.70023	0.63979
106	33.801	BB	0.0493	370.37140	115.85291	0.57957
107	33.943	BV	0.0507	13.66080	4.34574	0.02138
108	34.052	VB	0.0762	22.00468	4.19217	0.03443
109	35.385	BB	0.0800	31.73264	5.61127	0.04966
110	36.907	BB	0.0545	45.89801	13.22767	0.07182
111	37.241	BB	0.0770	36.41921	6.24491	0.05699
112	37.708	BB	0.0301	3.15416	2.28200	0.00494
113	38.271	BB	0.0653	10.17730	2.22632	0.01593
114	38.699	BB	0.0560	59.70583	15.48771	0.09343
115	40.557	BB	0.0547	24.09715	6.74468	0.03771

Peak #	RetTime [min]	Type	Width [min]	Area [pA*s]	Height [pA]	Area %
116	41.035	BB	0.0550	13.43704	3.73065	0.02103
117	41.903	BB	0.0523	9.87221	3.00457	0.01545
118	44.331	BB	0.0592	236.59454	61.02600	0.37023
119	44.701	BB	0.0595	13.01443	3.33928	0.02037
120	45.348	BB	0.0492	8.34692	2.61847	0.01306
121	47.127	BB	0.0538	102.62804	28.63823	0.16060

Totals : 6.39042e4 1.05034e4

=====
*** End of Report ***