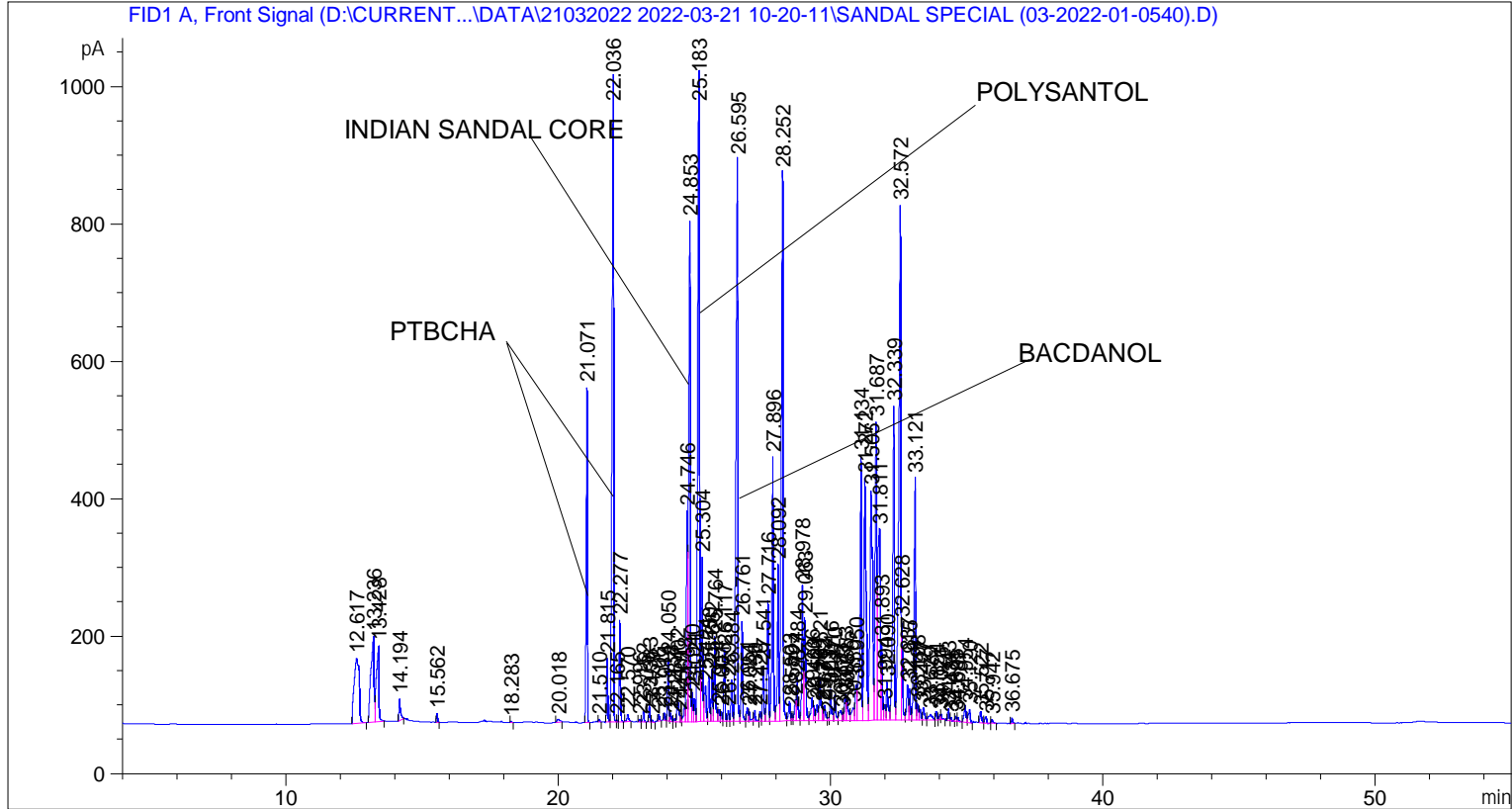


```

=====
Acq. Operator   : SYSTEM                               Seq. Line :    1
Acq. Instrument : BMV_NEW_GC_7820                     Location  : Vial 101
Injection Date  : 21-Mar-22 10:30:29 AM                Inj       :    1
                                                    Inj Volume: 0.5 µl

Acq. Method    : D:\CURRENT DATA\DATA\21032022 2022-03-21 10-20-11\UNIVERSAL BMV.M
Last changed   : 21-Mar-22 10:20:22 AM by SYSTEM
Analysis Method : C:\CHEM32\2\METHODS\COOLING.M
Last changed   : 18-Apr-22 10:49:36 AM by SYSTEM
                (modified after loading)

Additional Info : Peak(s) manually integrated
  
```



Peak #	RetTime [min]	Type	Width [min]	Area [pA*s]	Height [pA]	Area %
8	21.071	BB	0.0463	1476.71619	487.69601	2.65433
9	21.510	BB	0.0475	11.76900	3.56684	0.02115
10	21.815	BB	0.0449	277.81137	92.78571	0.49935
11	22.036	BV	0.0542	3640.12598	939.07977	6.54296
12	22.165	VV	0.0385	7.41178	2.93384	0.01332
13	22.277	VB	0.0489	456.80283	148.44360	0.82108
14	22.570	BB	0.0684	48.62233	10.43171	0.08740
15	22.996	BV	0.0454	10.91568	3.70223	0.01962
16	23.152	VB	0.0477	51.18123	16.26219	0.09200
17	23.363	BV	0.0493	78.54333	25.25004	0.14118
18	23.459	VB	0.0485	11.03751	3.52879	0.01984
19	23.706	BB	0.0499	32.44365	9.48704	0.05832
20	23.914	BV	0.0452	30.69448	11.10621	0.05517
21	24.050	VV	0.0475	275.12192	90.50140	0.49452
22	24.138	VV	0.0576	47.34114	12.38225	0.08509
23	24.287	VV	0.0585	17.98707	4.71107	0.03233
24	24.402	VV	0.0617	161.89285	37.27383	0.29100
25	24.507	VV	0.0399	22.97183	8.66284	0.04129
26	24.648	VV	0.0570	95.37790	24.16467	0.17144
27	24.746	VV	0.0489	996.50275	306.62906	1.79117
28	24.853	VV	0.0607	3164.42065	728.18091	5.68790
29	24.940	VV	0.0502	144.27216	42.90218	0.25932
30	25.021	VV	0.0515	112.42458	33.21938	0.20208
31	25.183	VV	0.0679	4456.80957	947.31342	8.01091
32	25.304	VV	0.0552	905.35645	239.15694	1.62734
33	25.424	VV	0.0728	274.55020	51.83133	0.49349
34	25.550	VV	0.0552	257.53024	67.93584	0.46290
35	25.662	VV	0.0499	250.79178	77.12304	0.45079
36	25.764	VV	0.0550	467.71014	123.93461	0.84069
37	25.914	VV	0.0591	72.65508	17.63065	0.13059
38	26.001	VV	0.0517	49.43748	14.17431	0.08886
39	26.117	VV	0.0516	343.14377	103.67329	0.61679
40	26.259	VV	0.0558	57.16390	15.96981	0.10275
41	26.384	VV	0.0575	233.68810	61.23321	0.42004
42	26.595	VV	0.0613	3662.99658	817.67108	6.58407
43	26.761	VV	0.0488	483.47641	145.35608	0.86903
44	26.951	VV	0.0531	67.16483	19.55464	0.12073
45	27.024	VB	0.0587	56.35638	13.78551	0.10130
46	27.230	BV	0.0590	61.73619	15.31303	0.11097
47	27.426	VV	0.0549	49.71365	14.19533	0.08936
48	27.541	VV	0.0533	280.08615	81.04371	0.50344
49	27.716	VV	0.0611	710.14789	175.79271	1.27646
50	27.896	VV	0.0530	1446.11755	383.05185	2.59933
51	28.092	VV	0.0525	808.05811	227.31497	1.45245
52	28.252	VV	0.0615	3385.92529	797.64227	6.08605
53	28.503	VV	0.0615	118.55152	29.09777	0.21309
54	28.589	VV	0.0476	35.97888	11.17364	0.06467
55	28.724	VV	0.0507	105.22945	30.90224	0.18915
56	28.784	VV	0.0619	270.58588	63.24057	0.48637
57	28.978	VV	0.0528	704.07434	196.59871	1.26554
58	29.063	VV	0.0639	688.62579	149.00974	1.23777
59	29.336	VV	0.0683	165.77707	34.34932	0.29798
60	29.400	VV	0.0496	76.78666	22.61944	0.13802
61	29.521	VV	0.0625	104.74247	23.72660	0.18827

Peak #	RetTime [min]	Type	Width [min]	Area [pA*s]	Height [pA]	Area %
62	29.621	VV	0.0626	264.29459	63.42275	0.47506
63	29.712	VV	0.0490	67.60277	20.20670	0.12151
64	29.792	VV	0.0606	96.00502	22.59611	0.17256
65	29.923	VV	0.0463	15.74214	4.80089	0.02830
66	30.016	VV	0.0589	182.95792	46.45945	0.32886
67	30.170	VV	0.0599	156.22408	37.25346	0.28081
68	30.383	VV	0.0860	102.68864	14.79017	0.18458
69	30.473	VV	0.0414	35.00075	11.55087	0.06291
70	30.553	VV	0.0563	145.33971	38.24806	0.26124
71	30.615	VV	0.0701	151.57092	30.97491	0.27244
72	30.850	VV	0.0839	121.25686	17.92563	0.21795
73	30.950	VV	0.0641	232.86063	51.16483	0.41856
74	31.134	VV	0.0632	1689.08459	385.18961	3.03605
75	31.272	VV	0.0815	1973.24219	351.47916	3.54681
76	31.505	VV	0.0889	2229.95215	333.89468	4.00824
77	31.687	VV	0.0590	1861.35938	434.22244	3.34571
78	31.811	VV	0.0879	1810.31921	278.23541	3.25397
79	31.893	VV	0.0497	378.56796	114.16023	0.68046
80	31.994	VV	0.0608	94.06929	22.50896	0.16909
81	32.090	VV	0.0617	241.39511	55.51069	0.43390
82	32.339	VV	0.0633	1971.55054	456.96036	3.54377
83	32.572	VV	0.0654	3616.09741	748.22540	6.49977
84	32.628	VB	0.0442	426.89761	141.29842	0.76733
85	32.837	BV	0.0599	205.05492	51.05552	0.36858
86	32.915	VV	0.0594	175.47446	46.07933	0.31541
87	33.121	VV	0.0591	1451.13269	352.10876	2.60834
88	33.198	VV	0.0586	96.97126	24.83592	0.17430
89	33.297	VV	0.0595	70.33125	15.92595	0.12642
90	33.427	VV	0.0672	84.23345	18.12981	0.15141
91	33.679	VV	0.1211	75.35992	7.91065	0.13546
92	33.894	VV	0.0554	45.42088	12.80288	0.08164
93	34.021	VV	0.0490	23.44819	6.67808	0.04215
94	34.076	VB	0.0478	23.73027	7.72831	0.04265
95	34.343	BV	0.0506	59.59199	17.54963	0.10711
96	34.435	VB	0.0484	16.57726	4.91466	0.02980
97	34.605	BV	0.0516	25.95239	7.46237	0.04665
98	34.681	VB	0.0633	27.65579	6.54481	0.04971
99	34.954	BV	0.0648	113.76978	24.66826	0.20450
100	35.120	VV	0.0720	103.91669	19.56929	0.18679
101	35.522	BV	0.0625	69.80875	17.14789	0.12548
102	35.717	VB	0.0693	41.37590	9.05241	0.07437
103	35.942	BB	0.0614	24.03303	5.78827	0.04320
104	36.675	BB	0.0551	26.93415	7.64121	0.04841

Totals : 5.56342e4 1.27395e4

=====
 *** End of Report ***