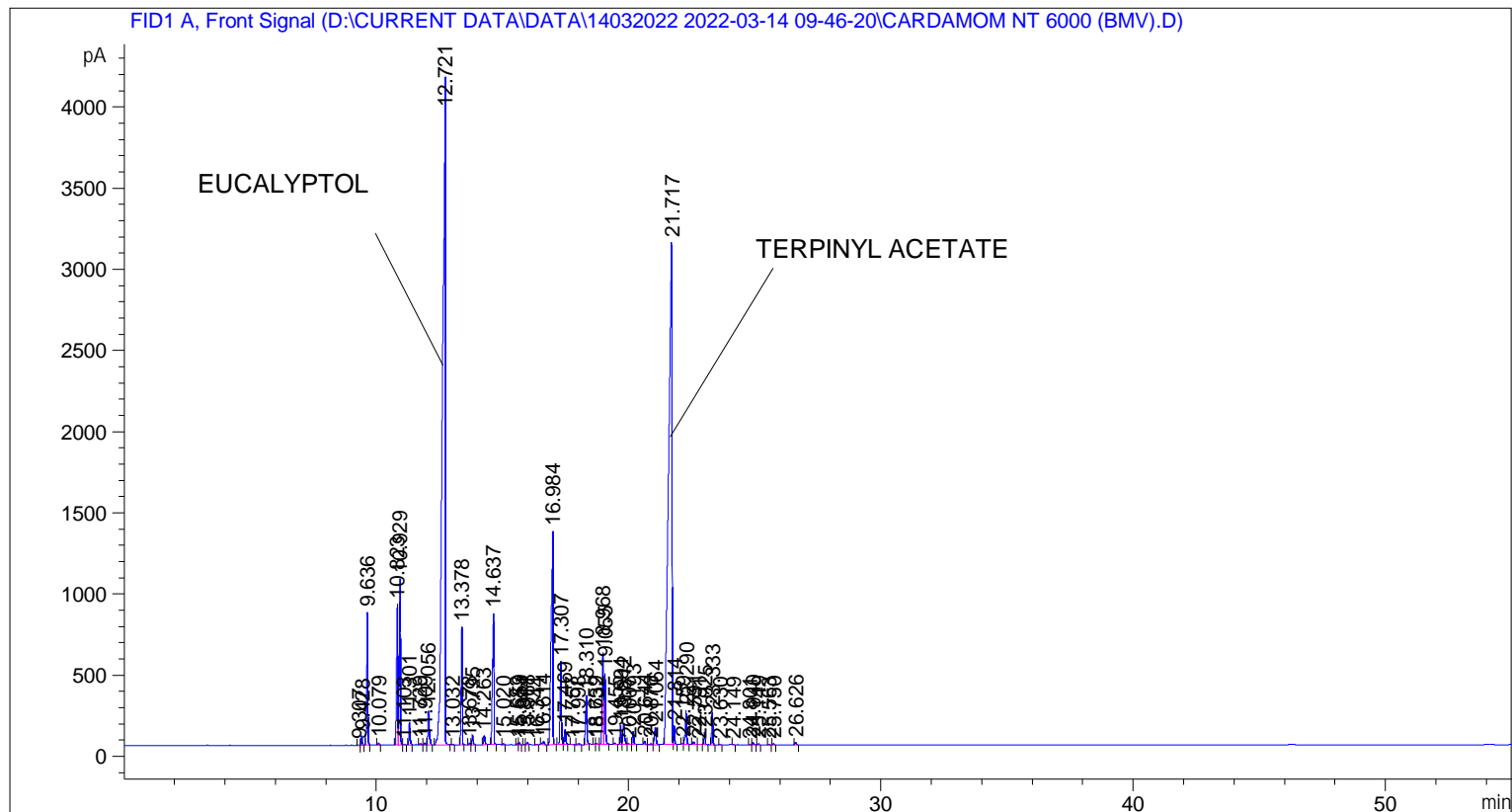


```

=====
Acq. Operator   : SYSTEM                               Seq. Line :    3
Acq. Instrument : BMV_NEW_GC_7820                    Location  : Vial 103
Injection Date  : 14-Mar-22 12:09:34 PM              Inj       :    1
                                                    Inj Volume: 0.5 µl

Acq. Method     : D:\CURRENT DATA\DATA\14032022 2022-03-14 09-46-20\UNIVERSAL BMV.M
Last changed    : 14-Mar-22 9:46:31 AM by SYSTEM
Analysis Method : C:\CHEM32\2\METHODS\COOLING.M
Last changed    : 05-Nov-20 11:10:00 AM by SYSTEM
  
```



=====
 Area Percent Report
 =====

```

Sorted By       :      Signal
Multiplier      :      1.0000
Dilution       :      1.0000
Do not use Multiplier & Dilution Factor with ISTDs
  
```

Signal 1: FID1 A, Front Signal

Peak #	RetTime [min]	Type	Width [min]	Area [pA*s]	Height [pA]	Area %
1	9.307	BV	0.0434	5.59737	2.07827	0.00580
2	9.428	VB	0.0437	164.82904	58.72430	0.17082
3	9.636	BB	0.0456	2353.42725	818.04834	2.43900
4	10.079	BB	0.0510	43.85691	12.78363	0.04545
5	10.823	BV	0.0616	3250.77124	869.48993	3.36898
6	10.929	VB	0.0439	2981.40161	1025.57581	3.08981
7	11.103	BB	0.0632	15.12342	3.51377	0.01567
8	11.301	BB	0.0494	439.47845	140.97101	0.45546
9	11.729	BV	0.0644	35.92280	8.15021	0.03723

Peak #	RetTime [min]	Type	Width [min]	Area [pA*s]	Height [pA]	Area %
10	11.909	VV	0.0509	41.96374	12.92478	0.04349
11	12.056	VB	0.0652	863.81024	209.18571	0.89522
12	12.721	BB	0.1012	3.27713e4	4102.42334	33.96295
13	13.032	BB	0.0389	10.49911	4.23239	0.01088
14	13.378	BB	0.0444	2081.10425	726.02856	2.15678
15	13.678	BV	0.0501	29.81454	9.62473	0.03090
16	13.795	VB	0.0462	181.39615	60.05528	0.18799
17	14.263	BB	0.0525	204.60118	57.47655	0.21204
18	14.637	BB	0.0557	3164.46240	807.06122	3.27953
19	15.020	BB	0.0470	18.04256	5.54578	0.01870
20	15.583	BV	0.0462	24.39905	8.32793	0.02529
21	15.659	VB	0.0462	37.40740	12.38949	0.03877
22	15.844	BV	0.0467	7.70476	2.58844	0.00798
23	15.968	VB	0.0528	49.76487	14.57275	0.05157
24	16.344	BB	0.0487	10.53425	3.35113	0.01092
25	16.614	BB	0.0771	109.67374	20.26922	0.11366
26	16.984	BB	0.0679	6862.58984	1315.47290	7.11213
27	17.307	BV	0.0546	1821.09473	511.15601	1.88731
28	17.469	VB	0.0498	308.23334	95.06094	0.31944
29	17.757	BB	0.0542	9.97162	2.89737	0.01033
30	17.998	BB	0.0731	42.80038	7.78741	0.04436
31	18.310	BB	0.0555	1094.36719	300.14651	1.13416
32	18.659	BV	0.0441	16.41050	5.61253	0.01701
33	18.732	VV	0.0586	25.24344	6.46229	0.02616
34	18.968	VV	0.0514	1999.42212	563.53113	2.07213
35	19.055	VB	0.0554	1732.92090	435.55569	1.79593
36	19.455	BB	0.0487	25.74741	7.96505	0.02668
37	19.694	BV	0.0474	362.84802	119.67578	0.37604
38	19.812	VV	0.0667	611.55011	130.40897	0.63379
39	20.007	VV	0.0742	28.96349	5.71101	0.03002
40	20.193	VB	0.0547	287.52020	80.47327	0.29798
41	20.644	BB	0.0538	74.05402	21.19679	0.07675
42	20.876	BV	0.0854	32.11994	5.03688	0.03329
43	21.064	VB	0.0649	457.66873	104.85875	0.47431
44	21.717	BV	0.1237	2.96138e4	3092.89551	30.69062
45	21.814	VB	0.0461	343.76559	117.63773	0.35627
46	22.159	BV	0.0593	25.17285	6.79028	0.02609
47	22.290	VB	0.0512	718.10254	208.55614	0.74421
48	22.591	BB	0.0652	64.72809	15.35927	0.06708
49	22.791	BB	0.0561	9.79820	2.59163	0.01015
50	23.025	BB	0.0462	227.87083	75.59669	0.23616
51	23.333	BB	0.0463	607.50214	200.98700	0.62959
52	23.630	BB	0.0426	8.55789	3.26461	0.00887
53	24.149	BB	0.0486	11.58982	3.50668	0.01201
54	24.801	BB	0.0457	5.44031	1.88496	0.00564
55	24.940	BB	0.0533	56.44461	15.92834	0.05850
56	25.149	BB	0.0495	18.12991	5.64430	0.01879
57	25.563	BB	0.0458	10.44377	3.60561	0.01082
58	25.750	BB	0.0484	20.99078	6.72123	0.02175
59	26.626	BB	0.0604	58.58114	15.05212	0.06071

Totals : 9.64913e4 1.64904e4

=====

*** End of Report ***