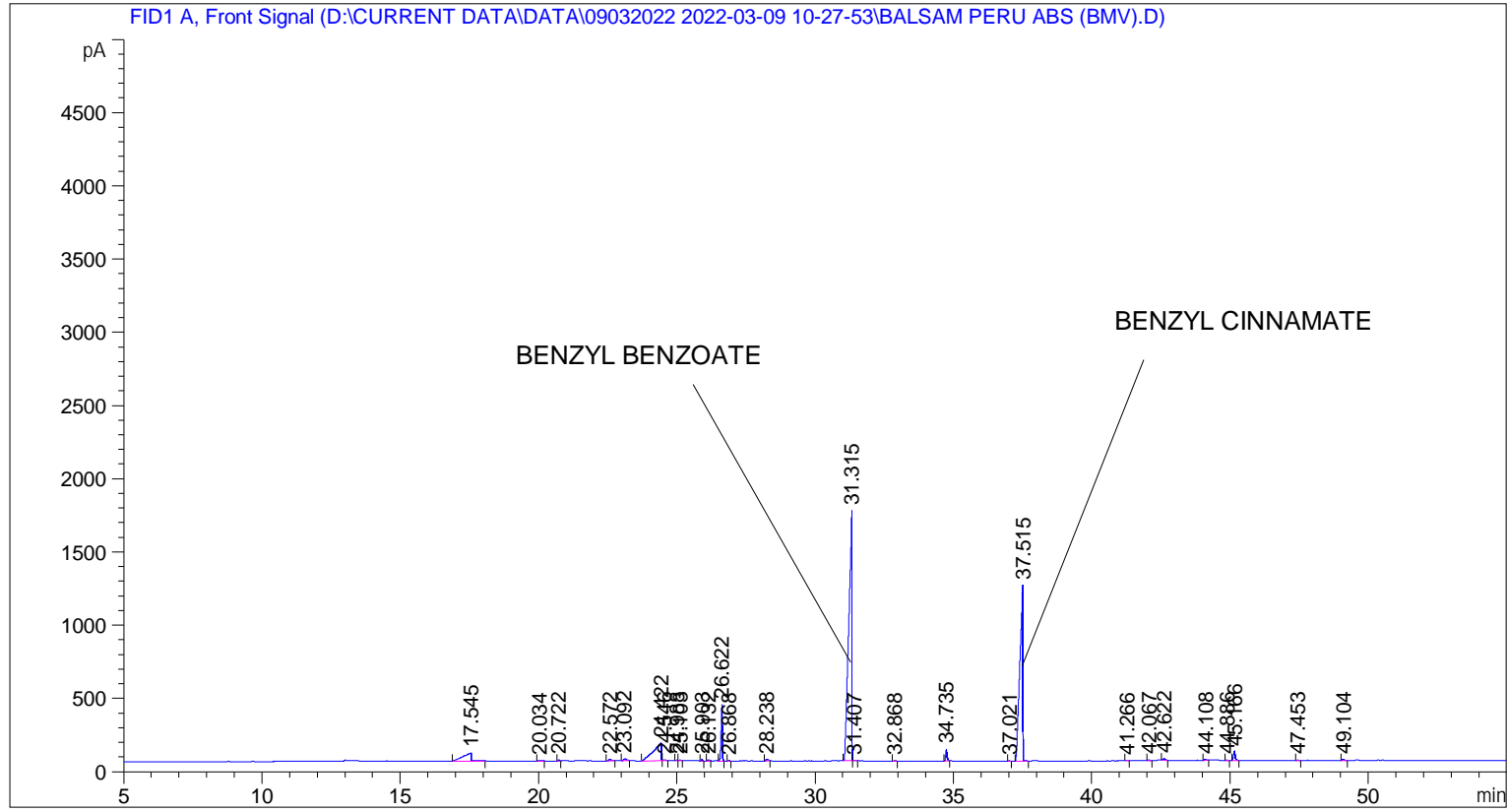


```
=====
Acq. Operator   : SYSTEM                               Seq. Line :    5
Acq. Instrument : BMV_NEW_GC_7820                     Location  : Vial 105
Injection Date  : 09-Mar-22 3:03:34 PM                 Inj       :    1
                                                    Inj Volume: 0.5 µl

Acq. Method    : D:\CURRENT DATA\DATA\09032022 2022-03-09 10-27-53\UNIVERSAL BMV.M
Last changed   : 09-Mar-22 10:28:03 AM by SYSTEM
Analysis Method: C:\CHEM32\2\DATA\01042018 2018-04-01 09-29-18\UNIVERSAL F.M (Sequence
Method)
Last changed   : 09-Mar-22 5:13:21 PM by SYSTEM
                (modified after loading)
Additional Info : Peak(s) manually integrated
```



=====
 Area Percent Report
 =====

```
Sorted By      :      Signal
Multiplier     :      1.0000
Dilution       :      1.0000
Do not use Multiplier & Dilution Factor with ISTDs
```

Signal 1: FID1 A, Front Signal

| Peak # | RetTime [min] | Type | Width [min] | Area [pA*s] | Height [pA] | Area % |
|--------|---------------|------|-------------|-------------|-------------|---------|
| 1 | 17.545 | BB | 0.2460 | 1163.37964 | 56.31075 | 4.05066 |
| 2 | 20.034 | BB | 0.0994 | 32.42879 | 4.05197 | 0.11291 |
| 3 | 20.722 | BV | 0.0549 | 31.34854 | 8.94877 | 0.10915 |
| 4 | 22.572 | BB | 0.0921 | 81.03800 | 11.95582 | 0.28216 |
| 5 | 23.092 | BB | 0.1022 | 102.12579 | 13.06767 | 0.35558 |
| 6 | 24.422 | BV | 0.2394 | 2375.30396 | 118.70906 | 8.27034 |

| Peak # | RetTime [min] | Type | Width [min] | Area [pA*s] | Height [pA] | Area % |
|--------|---------------|------|-------------|-------------|-------------|----------|
| 7 | 24.546 | VB | 0.0935 | 37.20819 | 5.26163 | 0.12955 |
| 8 | 24.988 | BV | 0.0486 | 12.88804 | 3.79429 | 0.04487 |
| 9 | 25.103 | VB | 0.0711 | 17.12566 | 3.56244 | 0.05963 |
| 10 | 25.903 | BB | 0.0450 | 27.13860 | 9.30044 | 0.09449 |
| 11 | 26.132 | BB | 0.0615 | 31.43127 | 7.41420 | 0.10944 |
| 12 | 26.622 | BB | 0.0523 | 1261.57825 | 384.49463 | 4.39257 |
| 13 | 26.868 | BB | 0.0457 | 14.64543 | 4.92389 | 0.05099 |
| 14 | 28.238 | BB | 0.0735 | 63.94211 | 12.33273 | 0.22263 |
| 15 | 31.315 | BV | 0.0990 | 1.37433e4 | 1706.16443 | 47.85151 |
| 16 | 31.407 | VB | 0.0542 | 10.20442 | 2.63671 | 0.03553 |
| 17 | 32.868 | BB | 0.0593 | 11.82437 | 2.98255 | 0.04117 |
| 18 | 34.735 | BB | 0.0528 | 266.45410 | 78.03304 | 0.92774 |
| 19 | 37.021 | BB | 0.0472 | 7.41412 | 2.39168 | 0.02581 |
| 20 | 37.515 | BB | 0.0924 | 8974.73242 | 1197.87720 | 31.24824 |
| 21 | 41.266 | BB | 0.0548 | 11.77848 | 3.28746 | 0.04101 |
| 22 | 42.067 | BB | 0.0616 | 28.41896 | 6.96128 | 0.09895 |
| 23 | 42.622 | BB | 0.0737 | 58.97359 | 11.72547 | 0.20533 |
| 24 | 44.108 | BB | 0.0576 | 29.38917 | 7.51667 | 0.10233 |
| 25 | 44.886 | BB | 0.0516 | 8.07646 | 2.50267 | 0.02812 |
| 26 | 45.166 | BB | 0.0612 | 265.53787 | 61.69910 | 0.92455 |
| 27 | 47.453 | BB | 0.0633 | 9.69530 | 2.33979 | 0.03376 |
| 28 | 49.104 | BB | 0.0724 | 43.36129 | 8.81335 | 0.15098 |

Totals : 2.87208e4 3739.05968

=====
*** End of Report ***