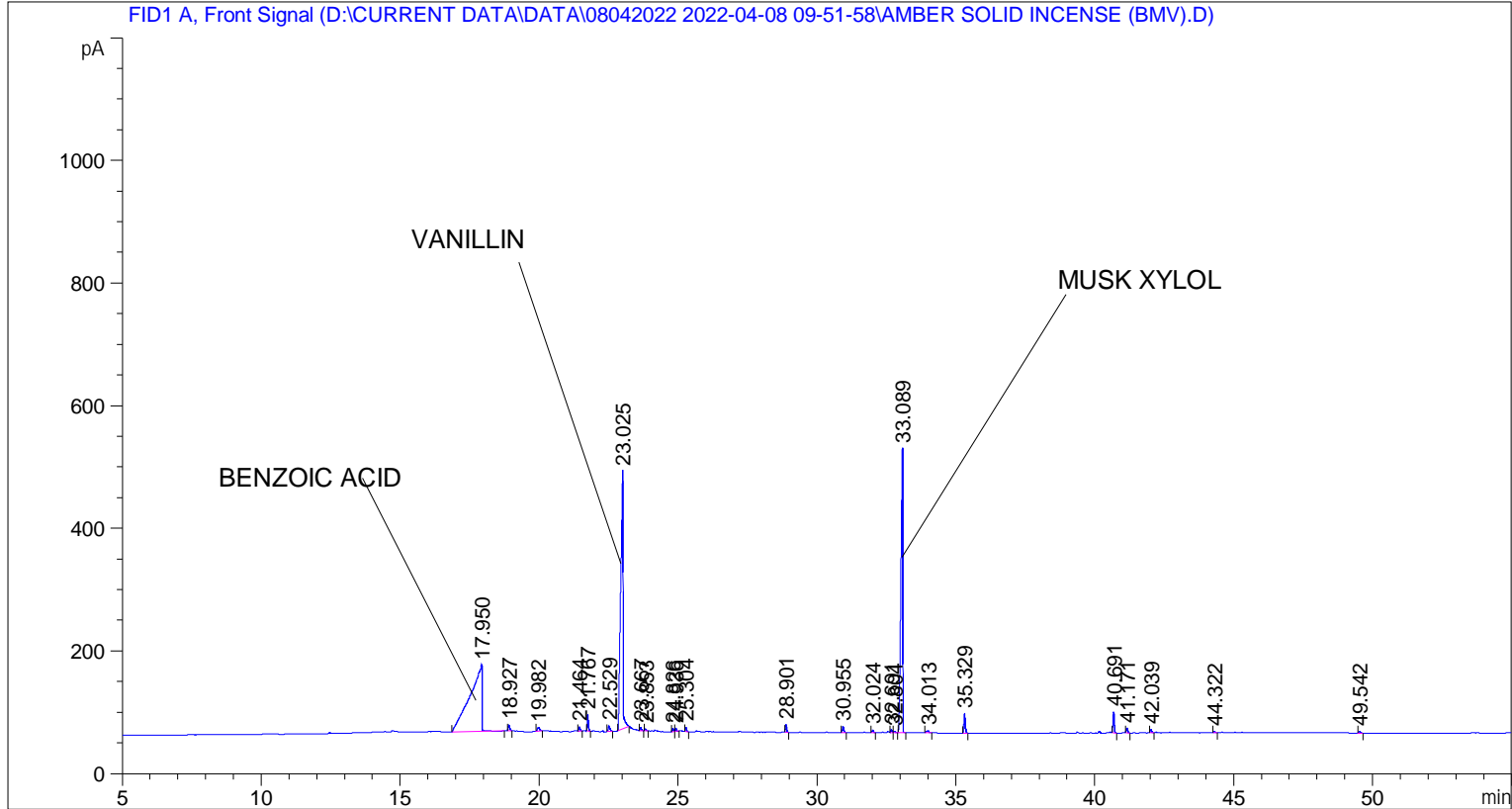


```

=====
Acq. Operator   : SYSTEM                               Seq. Line :    4
Acq. Instrument : BMV_NEW_GC_7820                     Location  : Vial 104
Injection Date  : 08-Apr-22 1:21:54 PM                Inj       :    1
                                                    Inj Volume: 0.5 µl

Acq. Method     : D:\CURRENT DATA\DATA\08042022 2022-04-08 09-51-58\UNIVERSAL BMV.M
Last changed    : 08-Apr-22 9:52:10 AM by SYSTEM
Analysis Method : C:\CHEM32\2\METHODS\COOLING.M
Last changed    : 12-Apr-22 1:37:43 PM by SYSTEM
                (modified after loading)

Additional Info : Peak(s) manually integrated
  
```



=====  
 Area Percent Report  
 =====

```

Sorted By      :      Signal
Multiplier     :      1.0000
Dilution       :      1.0000
Do not use Multiplier & Dilution Factor with ISTDs
  
```

Signal 1: FID1 A, Front Signal

Peak #	RetTime [min]	Type	Width [min]	Area [pA*s]	Height [pA]	Area %
1	17.950	BB	0.3574	3249.22729	108.80970	37.81275
2	18.927	BB	0.0599	37.12425	9.23316	0.43203
3	19.982	BB	0.0793	36.44510	6.31915	0.42413
4	21.464	BB	0.0485	22.99804	7.14698	0.26764
5	21.767	BB	0.0441	78.32403	26.78035	0.91149
6	22.529	BB	0.0647	40.38141	9.29972	0.46994
7	23.025	BB	0.0762	2494.21704	420.52344	29.02635

Peak #	RetTime [min]	Type	Width [min]	Area [pA*s]	Height [pA]	Area %
8	23.667	BB	0.0491	19.31404	5.76580	0.22477
9	23.853	BB	0.0422	6.01779	2.32708	0.07003
10	24.826	BV	0.0469	16.10157	5.38862	0.18738
11	24.936	VB	0.0464	14.57544	4.79981	0.16962
12	25.304	BB	0.0474	22.57888	7.43489	0.26276
13	28.901	BB	0.0482	39.83090	12.50007	0.46353
14	30.955	BB	0.0521	34.07694	10.15620	0.39657
15	32.024	BB	0.0533	13.13684	3.79976	0.15288
16	32.691	BV	0.0513	13.25615	4.25698	0.15427
17	32.804	VB	0.0517	6.35082	1.96638	0.07391
18	33.089	BB	0.0628	2134.19556	463.17484	24.83662
19	34.013	BB	0.0714	17.53730	3.50059	0.20409
20	35.329	BB	0.0555	112.01055	32.26372	1.30352
21	40.691	BB	0.0525	117.45074	34.65617	1.36683
22	41.171	BB	0.0554	28.05160	7.89798	0.32645
23	42.039	BB	0.0534	19.98909	5.77334	0.23262
24	44.322	BB	0.0534	7.45585	2.21004	0.08677
25	49.542	BB	0.0699	12.29274	2.66273	0.14306

Totals : 8592.93995 1198.64746

=====  
\*\*\* End of Report \*\*\*