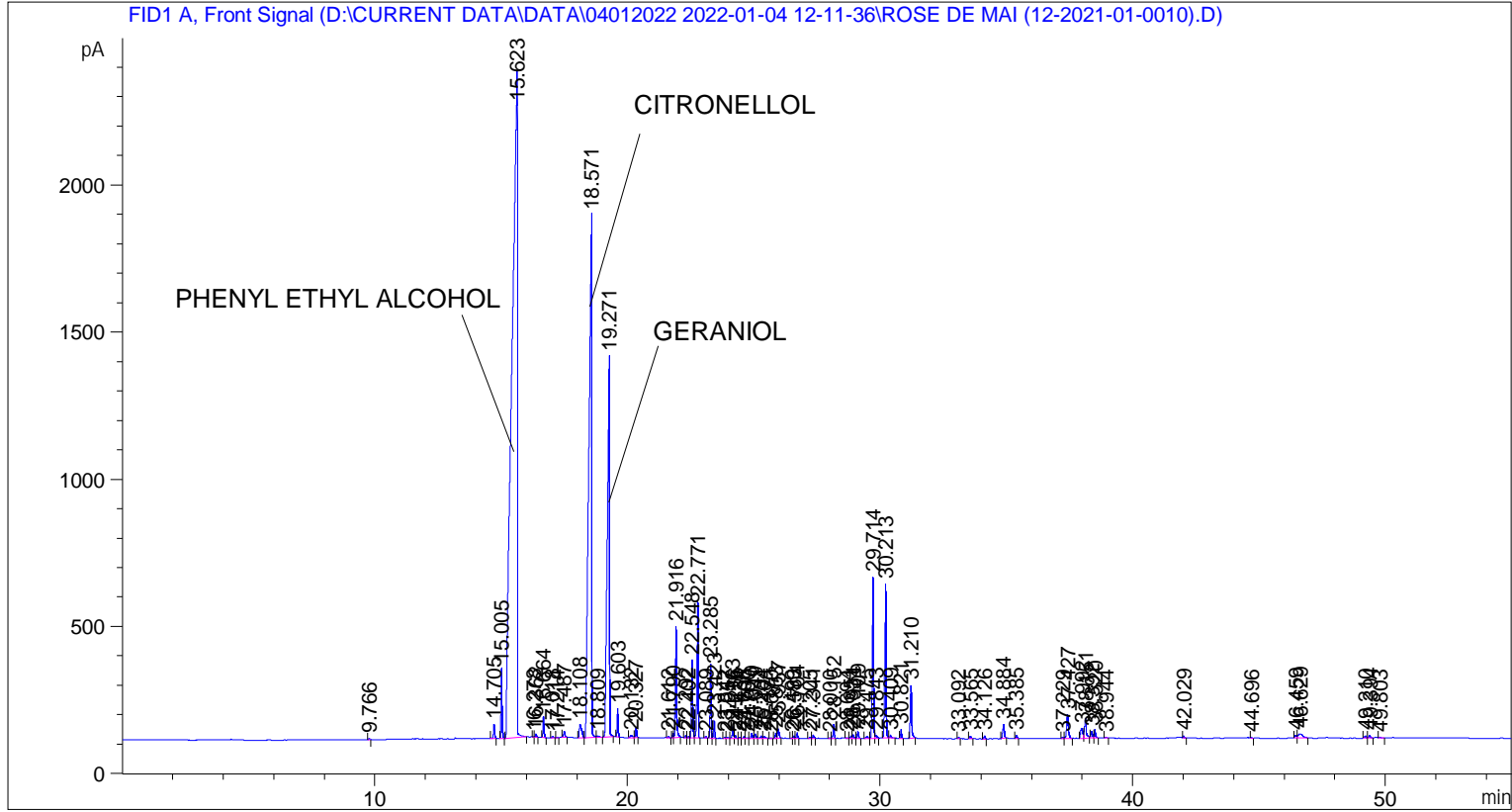


```

=====
Acq. Operator   : SYSTEM                               Seq. Line :    2
Acq. Instrument : BMV_NEW_GC_7820                     Location  : Vial 102
Injection Date  : 04-Jan-22 1:27:42 PM                 Inj       :    1
                                                    Inj Volume: 0.5 µl

Acq. Method    : D:\CURRENT DATA\DATA\04012022 2022-01-04 12-11-36\UNIVERSAL BMV.M
Last changed   : 04-Jan-22 12:11:36 PM by SYSTEM
Analysis Method : C:\CHEM32\2\METHODS\COOLING.M
Last changed   : 02-Mar-22 4:09:30 PM by SYSTEM
                (modified after loading)
  
```



=====
 Area Percent Report
 =====

```

Sorted By       : Signal
Multiplier     : 1.0000
Dilution       : 1.0000
Do not use Multiplier & Dilution Factor with ISTDs
  
```

Signal 1: FID1 A, Front Signal

| Peak # | RetTime [min] | Type | Width [min] | Area [pA*s] | Height [pA] | Area % |
|--------|---------------|------|-------------|-------------|-------------|----------|
| 1 | 9.766 | BB | 0.0474 | 13.60409 | 4.47908 | 0.01943 |
| 2 | 14.705 | BB | 0.0500 | 156.99995 | 46.99444 | 0.22418 |
| 3 | 15.005 | BB | 0.0444 | 685.42676 | 239.42097 | 0.97873 |
| 4 | 15.623 | BB | 0.1759 | 3.34565e4 | 2270.56372 | 47.77303 |
| 5 | 16.278 | BV | 0.0454 | 5.58315 | 2.01039 | 0.00797 |
| 6 | 16.362 | VB | 0.0474 | 31.75378 | 10.46383 | 0.04534 |
| 7 | 16.64 | BB | 0.0467 | 214.34462 | 72.00370 | 0.30607 |
| 8 | 17.018 | BB | 0.0598 | 22.38654 | 5.24629 | 0.03197 |

| Peak # | RetTime [min] | Type | Width [min] | Area [pA*s] | Height [pA] | Area % |
|--------|---------------|------|-------------|-------------|-------------|----------|
| 9 | 17.214 | BB | 0.0408 | 5.71708 | 2.16777 | 0.00816 |
| 10 | 17.487 | BB | 0.0614 | 82.68498 | 19.51573 | 0.11807 |
| 11 | 18.108 | BV | 0.0878 | 287.84424 | 45.50376 | 0.41102 |
| 12 | 18.571 | VV | 0.0985 | 1.42169e4 | 1774.45911 | 20.30044 |
| 13 | 18.809 | VB | 0.0825 | 37.02655 | 6.12897 | 0.05287 |
| 14 | 19.271 | BB | 0.0790 | 7971.08447 | 1292.07666 | 11.38202 |
| 15 | 19.603 | BB | 0.0444 | 277.91104 | 97.06099 | 0.39683 |
| 16 | 20.132 | BB | 0.0858 | 51.25322 | 8.21789 | 0.07319 |
| 17 | 20.327 | BB | 0.0461 | 99.39545 | 33.00099 | 0.14193 |
| 18 | 21.612 | BB | 0.0517 | 13.53643 | 4.29747 | 0.01933 |
| 19 | 21.790 | BV | 0.0436 | 40.49903 | 14.51547 | 0.05783 |
| 20 | 21.916 | VB | 0.0505 | 1278.16821 | 377.28189 | 1.82511 |
| 21 | 22.292 | BV | 0.0468 | 24.22451 | 8.35507 | 0.03459 |
| 22 | 22.402 | VV | 0.0445 | 12.93178 | 4.64689 | 0.01847 |
| 23 | 22.548 | VV | 0.0497 | 858.02478 | 265.18756 | 1.22519 |
| 24 | 22.771 | VB | 0.0498 | 1497.70703 | 462.09073 | 2.13860 |
| 25 | 23.089 | BB | 0.0576 | 20.15591 | 5.27605 | 0.02878 |
| 26 | 23.285 | BV | 0.0474 | 763.36511 | 251.89635 | 1.09002 |
| 27 | 23.423 | VB | 0.0477 | 179.91698 | 58.82260 | 0.25691 |
| 28 | 23.842 | BV | 0.0584 | 17.70590 | 4.45384 | 0.02528 |
| 29 | 23.957 | VV | 0.0661 | 20.01468 | 4.23884 | 0.02858 |
| 30 | 24.163 | VV | 0.0519 | 136.38725 | 39.92797 | 0.19475 |
| 31 | 24.256 | VB | 0.0515 | 33.89158 | 9.76652 | 0.04839 |
| 32 | 24.434 | BV | 0.0585 | 13.47544 | 3.30708 | 0.01924 |
| 33 | 24.606 | VV | 0.0561 | 25.16165 | 6.80805 | 0.03593 |
| 34 | 24.760 | VV | 0.0867 | 17.47773 | 2.72947 | 0.02496 |
| 35 | 24.910 | VV | 0.0563 | 62.24716 | 16.76618 | 0.08888 |
| 36 | 25.049 | VV | 0.0622 | 63.77199 | 15.42617 | 0.09106 |
| 37 | 25.284 | VV | 0.0775 | 41.53502 | 7.29131 | 0.05931 |
| 38 | 25.404 | VB | 0.0674 | 25.85445 | 5.54303 | 0.03692 |
| 39 | 25.670 | BB | 0.0406 | 6.15241 | 2.42491 | 0.00879 |
| 40 | 25.853 | BV | 0.0548 | 55.05963 | 16.12425 | 0.07862 |
| 41 | 25.957 | VB | 0.0593 | 127.93105 | 30.89374 | 0.18267 |
| 42 | 26.499 | BV | 0.0473 | 11.07910 | 3.66167 | 0.01582 |
| 43 | 26.583 | VV | 0.0503 | 31.76017 | 9.43757 | 0.04535 |
| 44 | 26.704 | VB | 0.0512 | 65.68237 | 20.04508 | 0.09379 |
| 45 | 27.205 | BV | 0.0487 | 10.71123 | 3.40874 | 0.01529 |
| 46 | 27.341 | VB | 0.0557 | 43.65342 | 11.65272 | 0.06233 |
| 47 | 28.000 | BV | 0.0503 | 7.26871 | 2.27475 | 0.01038 |
| 48 | 28.152 | VB | 0.0516 | 157.73619 | 48.99667 | 0.22523 |
| 49 | 28.694 | BV | 0.0594 | 7.56647 | 2.18531 | 0.01080 |
| 50 | 28.851 | VV | 0.0625 | 40.08706 | 10.06144 | 0.05724 |
| 51 | 28.934 | VV | 0.0533 | 42.05550 | 12.16423 | 0.06005 |
| 52 | 29.109 | VB | 0.0505 | 73.39165 | 22.83809 | 0.10480 |
| 53 | 29.475 | BV | 0.0750 | 44.67046 | 8.14381 | 0.06379 |
| 54 | 29.714 | VV | 0.0510 | 1972.45996 | 547.37878 | 2.81650 |
| 55 | 29.843 | VV | 0.0612 | 42.93107 | 9.98618 | 0.06130 |
| 56 | 30.213 | BB | 0.0537 | 1916.62878 | 523.48834 | 2.73678 |
| 57 | 30.409 | BB | 0.0480 | 23.94007 | 8.20441 | 0.03418 |
| 58 | 30.821 | BB | 0.0494 | 90.15299 | 28.91329 | 0.12873 |
| 59 | 31.210 | BB | 0.0555 | 669.81567 | 179.74373 | 0.95644 |
| 60 | 33.092 | BB | 0.0455 | 17.23178 | 5.83460 | 0.02461 |
| 61 | 33.565 | BB | 0.0530 | 26.90619 | 8.25511 | 0.03842 |
| 62 | 34.126 | BB | 0.0511 | 29.42574 | 9.00281 | 0.04202 |

| Peak # | RetTime [min] | Type | Width [min] | Area [pA*s] | Height [pA] | Area % |
|--------|---------------|------|-------------|-------------|-------------|---------|
| 63 | 34.884 | BB | 0.0632 | 216.23616 | 47.39839 | 0.30877 |
| 64 | 35.385 | BB | 0.0522 | 39.38068 | 11.15590 | 0.05623 |
| 65 | 37.229 | BV | 0.0468 | 11.70879 | 3.92386 | 0.01672 |
| 66 | 37.427 | VB | 0.0705 | 398.73364 | 82.29176 | 0.56936 |
| 67 | 37.992 | BV | 0.0741 | 188.95964 | 34.95192 | 0.26982 |
| 68 | 38.151 | VB | 0.0680 | 350.84961 | 67.10991 | 0.50098 |
| 69 | 38.392 | BV | 0.0619 | 92.85108 | 21.69025 | 0.13258 |
| 70 | 38.520 | VB | 0.0533 | 106.34898 | 29.34692 | 0.15186 |
| 71 | 38.944 | BB | 0.0695 | 12.30069 | 2.58472 | 0.01756 |
| 72 | 42.029 | BB | 0.0475 | 17.67437 | 5.98148 | 0.02524 |
| 73 | 44.696 | BB | 0.0458 | 7.64495 | 2.56211 | 0.01092 |
| 74 | 46.459 | BV | 0.0590 | 38.82837 | 9.25260 | 0.05544 |
| 75 | 46.629 | VB | 0.1655 | 184.28537 | 13.82282 | 0.26314 |
| 76 | 49.210 | BV | 0.0668 | 33.44311 | 7.24953 | 0.04775 |
| 77 | 49.394 | VB | 0.0697 | 38.99448 | 8.62746 | 0.05568 |
| 78 | 49.803 | BB | 0.0741 | 17.25058 | 3.24307 | 0.02463 |

Totals : 7.00322e4 9374.25576

=====
*** End of Report ***