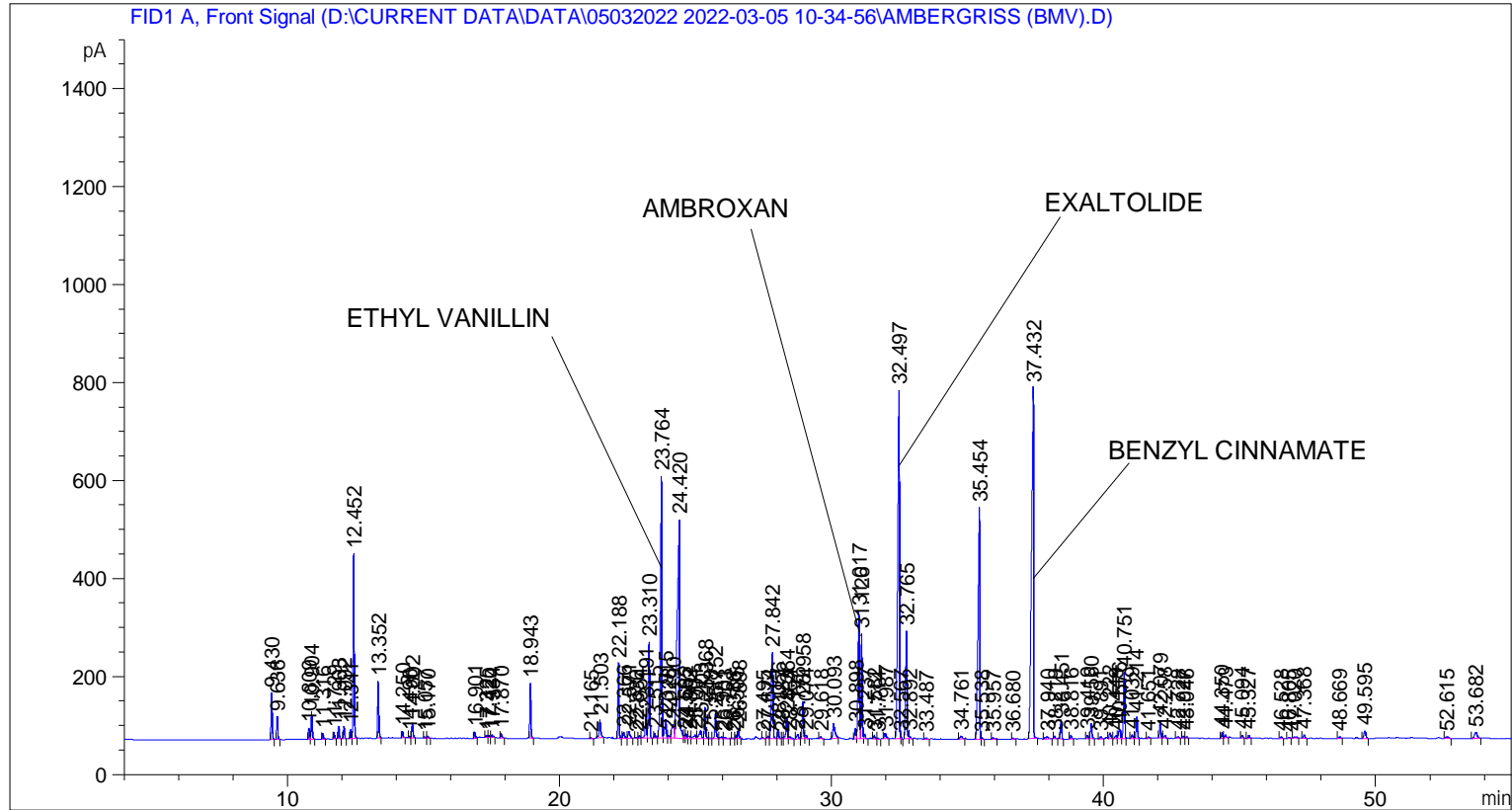


Sample Name: AMBERGRISS (BMV)

```

=====
Acq. Operator   : SYSTEM                               Seq. Line :    4
Acq. Instrument : BMV_NEW_GC_7820                     Location  : Vial 104
Injection Date  : 05-Mar-22 2:03:34 PM                 Inj       :    1
                                                    Inj Volume: 0.5 µl

Acq. Method    : D:\CURRENT DATA\DATA\05032022 2022-03-05 10-34-56\UNIVERSAL BMV.M
Last changed   : 05-Mar-22 10:35:07 AM by SYSTEM
Analysis Method: C:\CHEM32\2\DATA\01042018 2018-04-01 09-29-18\UNIVERSAL F.M (Sequence
Method)
Last changed   : 09-Mar-22 3:11:09 PM by SYSTEM
                (modified after loading)
Additional Info : Peak(s) manually integrated
    
```



Area Percent Report

```

Sorted By      :      Signal
Multiplier     :      1.0000
Dilution       :      1.0000
Do not use Multiplier & Dilution Factor with ISTDs
    
```

Signal 1: FID1 A, Front Signal

Peak #	RetTime [min]	Type	Width [min]	Area [pA*s]	Height [pA]	Area %
1	9.430	BB	0.0433	262.54416	94.82674	1.04525
2	9.636	BB	0.0441	132.67360	46.72112	0.52820
3	10.809	BV	0.0416	62.16335	22.95931	0.24749
4	10.904	VB	0.0456	165.13463	55.74286	0.65744
5	11.316	BB	0.0427	31.86596	11.37066	0.12687
6	11.729	BB	0.0429	37.92753	13.85640	0.15100

Sample Name: AMBERGRISS (BMV)

Peak #	RetTime [min]	Type	Width [min]	Area [pA*s]	Height [pA]	Area %
7	11.903	BB	0.0433	74.05074	26.71748	0.29481
8	12.092	BB	0.0433	70.76828	25.58241	0.28174
9	12.341	BV	0.0406	47.16370	18.58344	0.18777
10	12.452	VB	0.0435	1047.04932	376.23212	4.16854
11	13.352	BB	0.0446	334.28256	116.01409	1.33085
12	14.250	BB	0.0434	37.91946	13.26462	0.15097
13	14.496	BV	0.0460	9.44776	3.15115	0.03761
14	14.602	VB	0.0499	99.08516	30.53273	0.39448
15	15.057	BV	0.0451	9.23018	3.16081	0.03675
16	15.170	VB	0.0479	13.53492	4.40359	0.05389
17	16.901	BV	0.0441	40.52655	13.87405	0.16135
18	17.325	BV	0.0487	12.19341	3.87949	0.04854
19	17.420	VV	0.0451	9.72844	3.32458	0.03873
20	17.534	VB	0.0609	20.99647	5.00579	0.08359
21	17.870	BB	0.0506	29.04286	8.78284	0.11563
22	18.943	BB	0.0451	327.24765	112.08303	1.30285
23	21.165	BB	0.0414	6.89905	2.65115	0.02747
24	21.503	BB	0.0584	143.44824	36.05456	0.57110
25	22.188	BB	0.0468	457.87033	153.52899	1.82288
26	22.366	BB	0.0573	49.87179	12.57312	0.19855
27	22.571	BB	0.0692	70.28484	15.13703	0.27982
28	22.836	BV	0.0474	6.81219	2.30931	0.02712
29	22.954	VV	0.0477	18.34372	6.00001	0.07303
30	23.191	VV	0.0535	170.24402	47.88756	0.67778
31	23.310	VB	0.0545	663.28088	195.84303	2.64067
32	23.515	BB	0.0501	30.29773	9.27686	0.12062
33	23.764	BV	0.0581	2020.66858	534.25739	8.04473
34	23.915	VV	0.0584	156.97954	39.45808	0.62497
35	24.028	VV	0.0708	27.00731	5.45090	0.10752
36	24.190	VV	0.0694	146.36440	28.24831	0.58271
37	24.420	VV	0.0785	2733.32446	446.17767	10.88197
38	24.595	VV	0.0450	20.72237	6.71236	0.08250
39	24.662	VV	0.0577	36.57758	9.34383	0.14562
40	24.802	VV	0.0773	30.32190	5.33315	0.12072
41	25.001	VV	0.0903	49.63861	7.39662	0.19762
42	25.203	VV	0.0881	102.03912	16.27922	0.40624
43	25.368	VB	0.0496	208.75235	64.79645	0.83109
44	25.548	BV	0.0512	7.29028	2.22645	0.02902
45	25.752	VV	0.0541	184.29623	52.30761	0.73372
46	25.981	VV	0.0716	18.86835	3.63523	0.07512
47	26.103	VB	0.0554	13.19146	3.63102	0.05252
48	26.386	BV	0.0467	5.99280	2.07746	0.02386
49	26.505	VV	0.0468	21.47876	7.41709	0.08551
50	26.598	VB	0.0435	59.56834	21.39552	0.23715
51	27.495	BB	0.0459	8.98410	2.83822	0.03577
52	27.674	BV	0.0474	13.09260	4.44414	0.05212
53	27.842	VB	0.0750	795.63733	175.19951	3.16761
54	28.056	BB	0.0514	59.95900	18.71704	0.23871
55	28.187	BV	0.0478	6.73152	2.25444	0.02680
56	28.364	VV	0.0538	153.76237	43.98391	0.61216
57	28.464	VB	0.0791	26.77465	4.58810	0.10660
58	28.776	BV	0.0687	46.41209	9.38015	0.18478
59	28.958	VV	0.0503	244.84511	76.51127	0.97478
60	29.074	VB	0.0729	38.26830	7.33674	0.15235

Sample Name: AMBERGRISS (BMV)

Peak #	RetTime [min]	Type	Width [min]	Area [pA*s]	Height [pA]	Area %
61	29.618	BB	0.0567	18.09629	4.72112	0.07205
62	30.093	BB	0.0753	160.96056	30.15921	0.64082
63	30.898	BV	0.0519	77.82638	22.18418	0.30984
64	31.017	VV	0.0528	864.42609	259.69110	3.44147
65	31.126	VV	0.0494	685.49078	213.57510	2.72909
66	31.237	VB	0.0545	31.86441	8.95461	0.12686
67	31.582	BB	0.0563	23.78099	6.41139	0.09468
68	31.714	BB	0.0471	7.32397	2.50278	0.02916
69	31.987	BB	0.0652	52.60530	11.98197	0.20943
70	32.497	BV	0.0582	3003.52075	712.04468	11.95768
71	32.567	VB	0.0369	10.35871	4.48976	0.04124
72	32.765	BV	0.0534	761.28290	219.66037	3.03084
73	32.892	VB	0.0615	20.54317	5.04165	0.08179
74	33.487	BB	0.0633	11.33265	2.79403	0.04512
75	34.761	BB	0.0662	24.68446	5.03363	0.09827
76	35.454	BV	0.0609	2181.09692	472.39056	8.68343
77	35.538	VB	0.0515	13.53465	4.21273	0.05388
78	35.957	BB	0.0659	13.27382	3.23199	0.05285
79	36.680	BB	0.0349	3.05426	1.79157	0.01216
80	37.432	BB	0.0671	3686.58252	715.26337	14.67710
81	37.940	BB	0.1021	36.70309	4.86056	0.14612
82	38.219	BB	0.0495	16.59600	5.31111	0.06607
83	38.451	BB	0.0498	121.81634	38.58377	0.48498
84	38.816	BB	0.0557	27.31519	7.63608	0.10875
85	39.419	BV	0.0561	27.60614	7.47040	0.10991
86	39.560	VB	0.0582	122.33996	31.60723	0.48706
87	39.891	BB	0.0628	18.17391	4.34223	0.07235
88	40.222	BB	0.0549	46.95950	11.44751	0.18696
89	40.449	BV	0.0684	30.92958	6.28473	0.12314
90	40.576	VV	0.0728	96.15223	19.41824	0.38280
91	40.751	VB	0.0528	460.90411	135.16095	1.83496
92	41.039	BV	0.0565	32.01989	7.86660	0.12748
93	41.214	VB	0.0526	153.36150	44.02132	0.61057
94	41.651	BB	0.0546	11.46711	2.99984	0.04565
95	42.079	BB	0.0500	114.06543	35.01956	0.45412
96	42.258	BB	0.0650	28.82488	6.47032	0.11476
97	42.728	BB	0.0526	11.96060	3.71578	0.04762
98	42.927	BV	0.0471	12.48580	4.03616	0.04971
99	43.046	VB	0.0522	12.68609	3.77398	0.05051
100	44.350	BV	0.0501	37.20975	11.69263	0.14814
101	44.473	VB	0.0489	17.73801	5.60775	0.07062
102	45.094	BB	0.0523	22.44366	6.34629	0.08935
103	45.327	BB	0.0551	24.65601	6.67418	0.09816
104	46.528	BB	0.0483	13.12404	3.70560	0.05225
105	46.805	BB	0.0483	7.81589	2.26239	0.03112
106	47.020	BB	0.0859	14.96620	2.33191	0.05958
107	47.368	BB	0.0579	27.46595	7.29312	0.10935
108	48.669	BB	0.0581	12.40171	3.43744	0.04937
109	49.595	BB	0.0759	71.80500	14.98301	0.28587
110	52.615	BB	0.0983	22.79194	3.57808	0.09074
111	53.682	BB	0.0956	82.01324	11.71992	0.32651

Totals : 2.51179e4 6258.52329

Sample Name: AMBERGRISS (BMV)

=====

\*\*\* End of Report \*\*\*