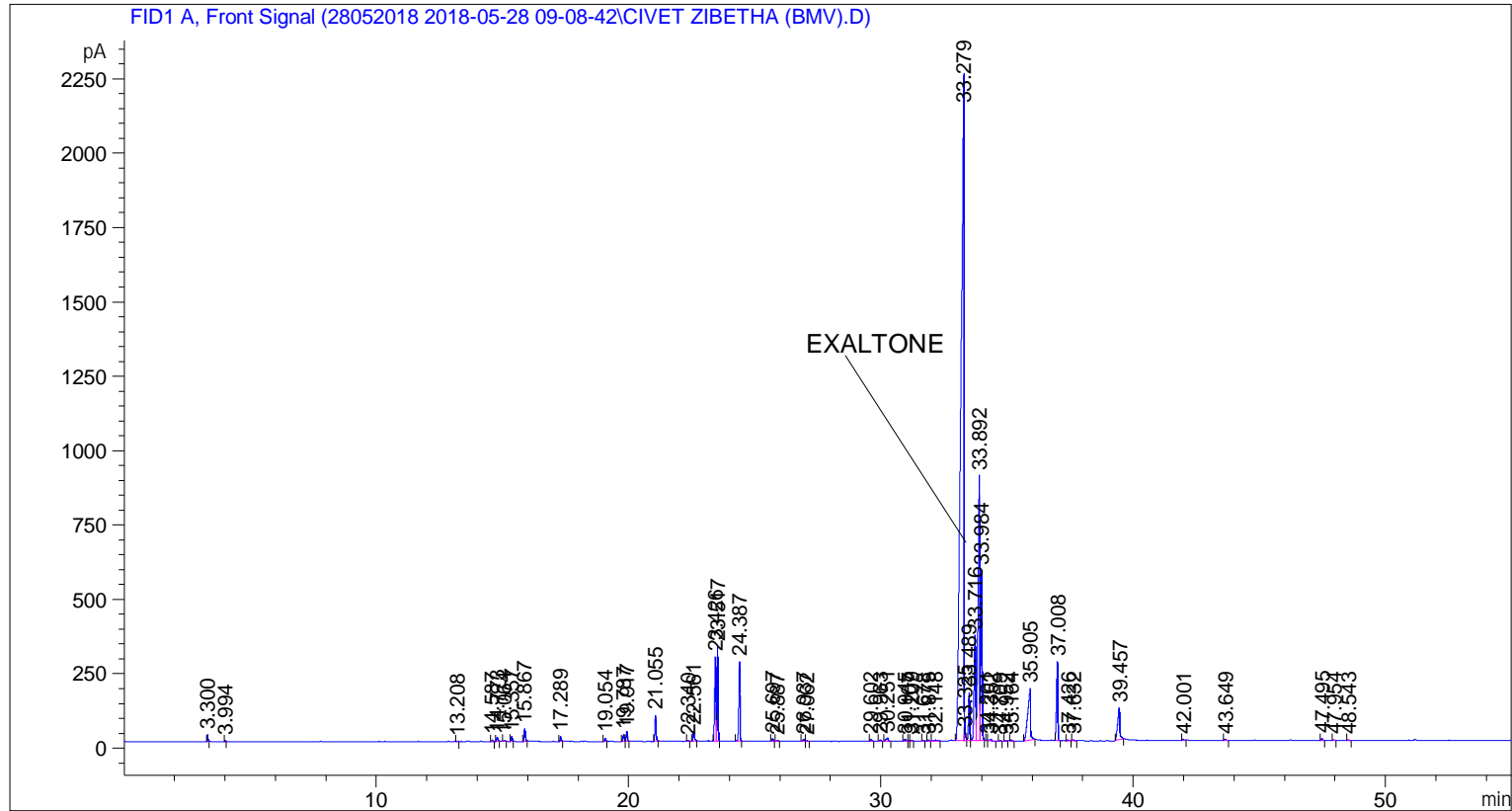


```
=====
Acq. Operator   : SYSTEM                               Seq. Line :    4
Acq. Instrument : BMV_NEW_GC_7820                     Location  : Vial 104
Injection Date  : 5/28/2018 12:42:54 PM                Inj       :    1
                                                    Inj Volume: 0.5 µl

Method          : C:\CHEM32\2\DATA\28052018 2018-05-28 09-08-42\UNIVERSAL F.M (Sequence
                Method)
Last changed    : 5/28/2018 9:08:51 AM by SYSTEM
=====
```



=====
 Area Percent Report
 =====

```
Sorted By      :      Signal
Multiplier     :      1.0000
Dilution       :      1.0000
Do not use Multiplier & Dilution Factor with ISTDs
```

Signal 1: FID1 A, Front Signal

Peak #	RetTime [min]	Type	Width [min]	Area [pA*s]	Height [pA]	Area %
1	3.300	BB	0.0274	41.36110	22.51369	0.11842
2	3.994	BB	0.0290	6.91088	3.50634	0.01979
3	13.208	BB	0.0456	5.85476	1.97483	0.01676
4	14.587	BB	0.0452	15.92507	5.28147	0.04559
5	14.773	BB	0.0537	51.15114	14.30733	0.14644
6	15.064	BB	0.0487	12.84529	4.19680	0.03678
7	15.357	BB	0.0458	48.95388	16.89046	0.14015
8	15.867	BB	0.0494	139.54102	42.40034	0.39950
9	17.289	BB	0.0468	45.70562	14.90269	0.13085
10	19.054	BB	0.0494	39.26394	11.61731	0.11241

Sample Name: CIVET ZIBETHA (BMV)

Peak #	RetTime [min]	Type	Width [min]	Area [pA*s]	Height [pA]	Area %
11	19.787	BV	0.0589	84.81622	22.52702	0.24283
12	19.917	VB	0.0481	98.58399	31.81739	0.28224
13	21.055	BB	0.0488	273.82523	86.75967	0.78395
14	22.340	BB	0.0494	10.17461	3.09291	0.02913
15	22.561	BB	0.0548	128.08464	34.88313	0.36670
16	23.426	BV	0.0536	987.02014	283.33517	2.82581
17	23.517	VB	0.0503	986.70905	317.39044	2.82492
18	24.387	BB	0.0475	836.98938	267.62534	2.39627
19	25.697	BB	0.0524	28.61179	8.47824	0.08191
20	25.887	BB	0.0519	10.39739	3.11534	0.02977
21	26.937	BV	0.0674	35.15413	7.53239	0.10065
22	27.062	VB	0.0530	9.67419	2.89472	0.02770
23	29.602	BB	0.0566	24.96766	7.17198	0.07148
24	29.963	BB	0.0517	17.13122	5.16135	0.04905
25	30.251	BB	0.0737	62.07073	11.73268	0.17771
26	30.945	BB	0.0763	35.84932	6.82124	0.10264
27	31.107	BV	0.0549	10.65493	2.96432	0.03050
28	31.209	VB	0.0576	13.75526	3.51649	0.03938
29	31.678	BB	0.0595	10.81574	2.65902	0.03097
30	31.875	BB	0.0541	13.67254	3.69853	0.03914
31	32.148	BB	0.1168	29.32680	3.35982	0.08396
32	33.279	BV	0.1098	1.95269e4	2236.76782	55.90501
33	33.325	VV	0.0365	66.45024	25.39291	0.19024
34	33.489	VV	0.0499	521.98157	160.84897	1.49442
35	33.716	VV	0.0627	1485.75098	355.88324	4.25366
36	33.892	VV	0.0659	4183.14453	888.95496	11.97621
37	33.984	VB	0.0514	1877.57593	571.11810	5.37544
38	34.201	BV	0.0397	6.56948	2.49678	0.01881
39	34.352	VB	0.0751	25.41071	4.77576	0.07275
40	34.709	BB	0.0498	8.83980	2.80601	0.02531
41	34.952	BB	0.0350	3.60569	1.82509	0.01032
42	35.164	BB	0.0462	12.44509	4.37586	0.03563
43	35.905	BB	0.1007	1338.65869	174.07713	3.83254
44	37.008	BB	0.0576	990.26270	265.01501	2.83509
45	37.426	BB	0.0605	16.37644	4.29315	0.04689
46	37.632	BB	0.0623	18.00036	4.01915	0.05153
47	39.457	BB	0.0787	645.11279	108.02703	1.84694
48	42.001	BB	0.0552	14.08928	3.89099	0.04034
49	43.649	BB	0.0642	25.24784	5.75461	0.07228
50	47.495	BB	0.0513	24.38278	6.72256	0.06981
51	47.954	BB	0.0593	8.89357	2.28975	0.02546
52	48.543	BB	0.0674	13.24734	3.00597	0.03793

Totals : 3.49288e4 6086.46929

*** End of Report ***