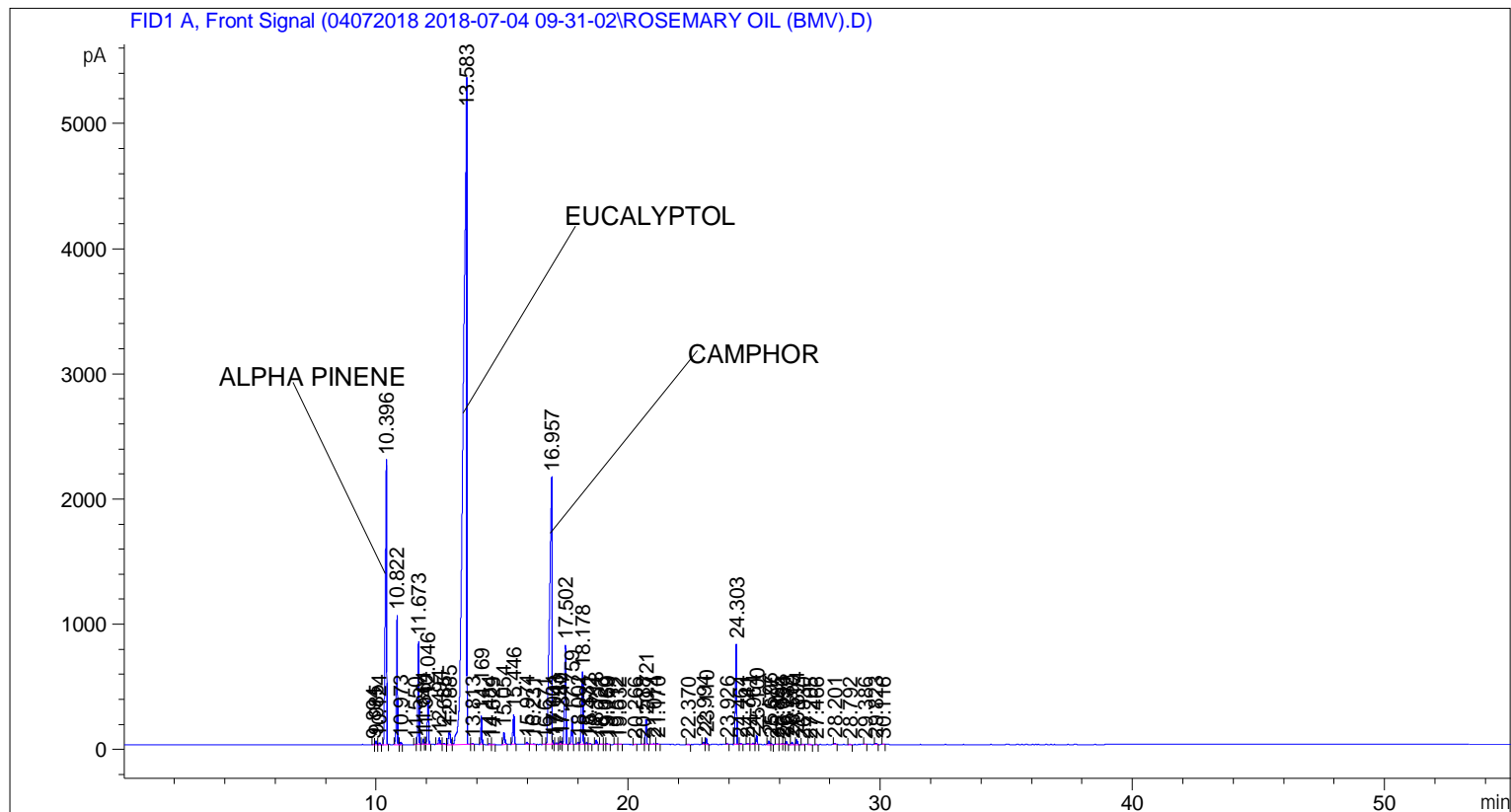


```
=====
Acq. Operator   : SYSTEM                               Seq. Line :    1
Acq. Instrument : BMV_NEW_GC_7820                     Location  : Vial 101
Injection Date  : 7/4/2018 9:34:57 AM                 Inj       :    1
                                                    Inj Volume: 0.5 µl

Method          : C:\CHEM32\2\DATA\04072018 2018-07-04 09-31-02\UNIVERSAL F.M (Sequence
                Method)
Last changed    : 7/4/2018 9:31:08 AM by SYSTEM
=====
```



=====
 Area Percent Report
 =====

```
Sorted By      : Signal
Multiplier     : 1.0000
Dilution       : 1.0000
Do not use Multiplier & Dilution Factor with ISTDs
```

Signal 1: FID1 A, Front Signal

Peak #	RetTime [min]	Type	Width [min]	Area [pA*s]	Height [pA]	Area %
1	9.894	BV	0.0419	8.00154	3.01859	0.00838
2	9.985	VV	0.0460	81.96137	28.13012	0.08589
3	10.124	VB	0.0493	50.63988	16.29636	0.05306
4	10.396	BB	0.0531	8761.37109	2268.08765	9.18084
5	10.822	BB	0.0448	3074.66992	1030.98364	3.22188
6	10.973	BB	0.0428	54.93174	20.16653	0.05756
7	11.550	BV	0.0420	5.12273	1.99301	0.00537
8	11.673	VB	0.0455	2441.21973	825.77692	2.55810
9	11.864	BV	0.0505	133.06866	41.38010	0.13944
10	11.940	VV	0.0425	30.71092	11.01729	0.03218

Sample Name: ROSEMARY OIL (BMV)

Peak #	RetTime [min]	Type	Width [min]	Area [pA*s]	Height [pA]	Area %
11	12.046	VB	0.0523	1169.78735	347.53009	1.22579
12	12.494	BB	0.0630	208.82120	51.78479	0.21882
13	12.685	BB	0.0603	23.13005	6.08945	0.02424
14	12.885	BV	0.0980	565.01642	95.46874	0.59207
15	13.583	VV	0.1209	5.15510e4	5325.72314	54.01911
16	13.813	VB	0.0420	20.63028	7.53129	0.02162
17	14.169	BB	0.0420	605.58258	227.76898	0.63458
18	14.484	BB	0.0435	17.33607	6.03883	0.01817
19	14.629	BB	0.0525	12.72982	3.66766	0.01334
20	15.054	BB	0.0552	364.13370	93.96880	0.38157
21	15.446	BB	0.0591	925.47009	239.58998	0.96978
22	15.974	BB	0.0570	69.64394	19.35213	0.07298
23	16.231	BB	0.0736	27.03209	5.20751	0.02833
24	16.671	BV	0.0747	13.85504	3.01047	0.01452
25	16.957	VV	0.0822	1.39599e4	2138.16577	14.62829
26	17.001	VB	0.0252	36.02826	20.78261	0.03775
27	17.143	BV	0.0501	50.50908	15.45113	0.05293
28	17.280	VV	0.0414	69.80766	25.91023	0.07315
29	17.347	VV	0.0439	76.64897	26.37990	0.08032
30	17.502	VB	0.0648	3258.99463	796.05396	3.41502
31	17.759	BB	0.0453	628.94653	213.73477	0.65906
32	18.002	BV	0.0501	56.33073	17.23682	0.05903
33	18.178	VB	0.0526	2164.01050	578.98077	2.26762
34	18.331	BB	0.0464	48.08191	15.85287	0.05038
35	18.472	BB	0.0464	19.49926	6.61601	0.02043
36	18.718	BB	0.0442	100.34895	35.21926	0.10515
37	18.923	BB	0.0567	11.17888	2.85333	0.01171
38	19.080	BV	0.0547	16.89507	4.72751	0.01770
39	19.169	VB	0.0476	25.35692	8.30335	0.02657
40	19.512	BV	0.0694	17.25437	3.44879	0.01808
41	19.632	VB	0.0437	7.46375	2.74270	0.00782
42	20.266	BB	0.0533	8.63744	2.49819	0.00905
43	20.588	BV	0.0462	13.32672	4.67723	0.01396
44	20.721	VB	0.0458	597.61786	200.47235	0.62623
45	21.014	BV	0.0711	26.98514	5.15311	0.02828
46	21.170	VB	0.0558	22.51348	5.99154	0.02359
47	22.370	BB	0.0634	13.04447	3.01815	0.01367
48	22.994	BV	0.0506	55.97432	17.38720	0.05865
49	23.110	VB	0.0493	158.53824	50.88674	0.16613
50	23.926	BB	0.0509	17.66275	5.29882	0.01851
51	24.303	BB	0.0538	2861.95068	799.12335	2.99897
52	24.464	BB	0.0481	23.16289	7.48058	0.02427
53	24.741	BB	0.0511	27.22755	8.12055	0.02853
54	24.964	BV	0.0629	47.68966	10.93210	0.04997
55	25.100	VB	0.0484	228.24367	73.07923	0.23917
56	25.596	BV	0.0498	96.55729	29.03815	0.10118
57	25.677	VB	0.0493	18.73359	5.85381	0.01963
58	25.895	BB	0.0605	15.85303	3.73912	0.01661
59	26.096	BV	0.0697	36.60686	7.15877	0.03836
60	26.154	VB	0.0475	24.87045	7.73607	0.02606
61	26.282	BB	0.0490	64.36018	20.29845	0.06744
62	26.510	BB	0.0519	54.91208	16.45181	0.05754
63	26.694	BB	0.0544	139.81625	39.41317	0.14651
64	26.930	BB	0.0462	7.26594	2.40777	0.00761

Sample Name: ROSEMARY OIL (BMV)

Peak #	RetTime [min]	Type	Width [min]	Area [pA*s]	Height [pA]	Area %
65	27.205	BB	0.0520	15.28654	4.57474	0.01602
66	27.466	BB	0.0478	8.03732	2.61907	0.00842
67	28.201	BB	0.0527	32.14361	9.45220	0.03368
68	28.792	BB	0.0508	6.20908	1.91784	0.00651
69	29.386	BB	0.0494	10.84269	3.38242	0.01136
70	29.823	BB	0.0540	26.18991	7.64115	0.02744
71	30.116	BB	0.0514	7.63847	2.31957	0.00800

Totals : 9.54311e4 1.59502e4

=====
*** End of Report ***