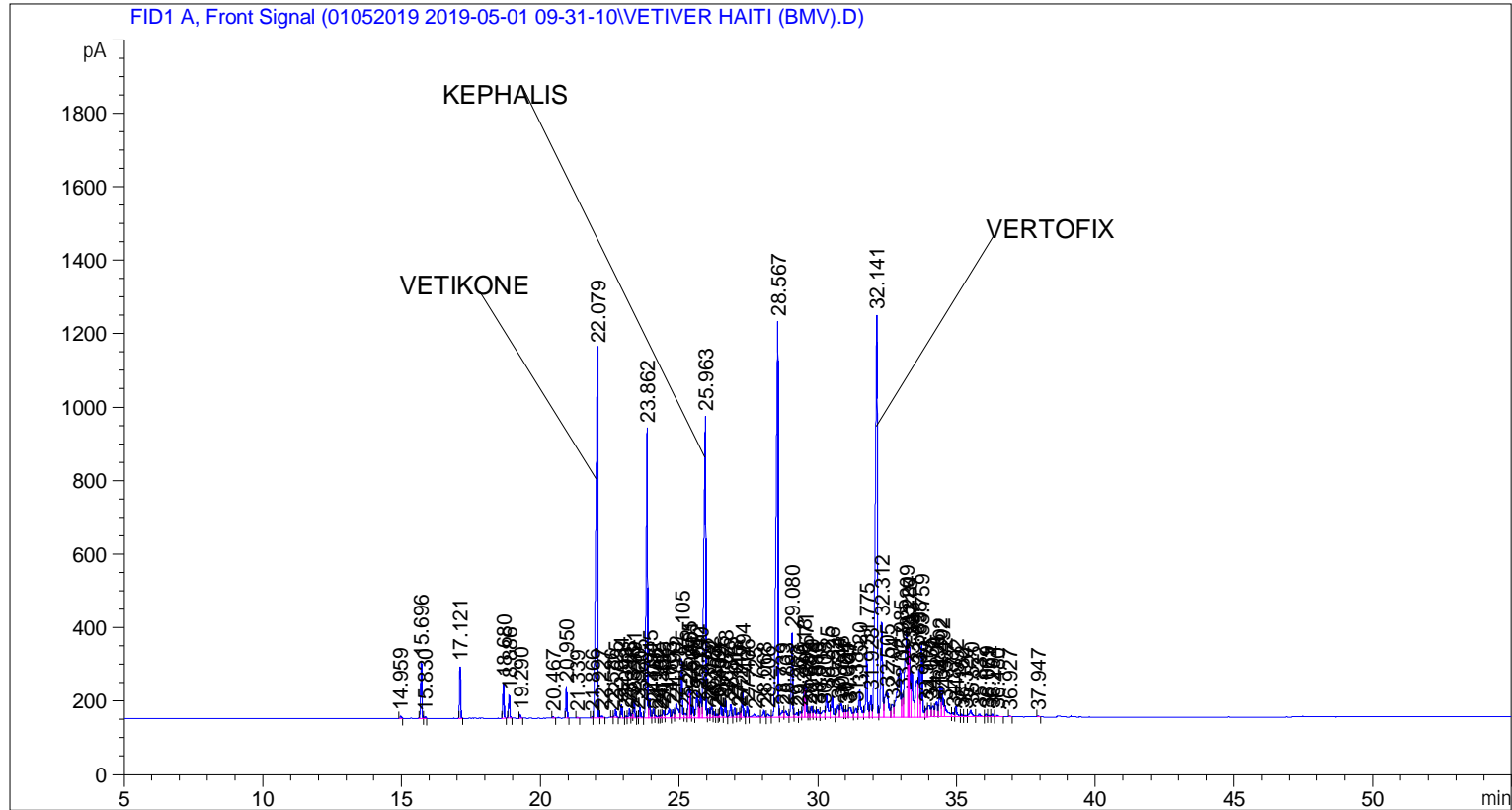


```

=====
Acq. Operator   : SYSTEM                               Seq. Line :    4
Acq. Instrument : BMV_NEW_GC_7820                     Location  : Vial 104
Injection Date  : 5/1/2019 1:11:01 PM                 Inj       :    1
                                                    Inj Volume: 0.5 µl

Acq. Method     : C:\CHEM32\2\DATA\01052019 2019-05-01 09-31-10\UNIVERSAL BMV.M
Last changed    : 5/1/2019 9:31:17 AM by SYSTEM
Analysis Method : C:\CHEM32\2\DATA\01052019 2019-05-01 09-31-10\UNIVERSAL BMV.M (Sequence
Method)
Last changed    : 5/16/2019 11:07:09 AM by SYSTEM
                  (modified after loading)
  
```



=====
 Area Percent Report
 =====

```

Sorted By      :      Signal
Multiplier     :      1.0000
Dilution      :      1.0000
Do not use Multiplier & Dilution Factor with ISTDs
  
```

Signal 1: FID1 A, Front Signal

Peak #	RetTime [min]	Type	Width [min]	Area [pA*s]	Height [pA]	Area %
1	3.231	BB	0.0271	12.17839	6.44205	0.01427
2	3.324	BB	0.0181	9.71505	8.02563	0.01138
3	3.438	BB	0.0180	2.48364	2.22562	0.00291
4	3.574	BV S	0.0193	4176.69971	3407.82251	4.89325
5	3.654	VV S	0.0192	6429.60693	5273.15381	7.53266
6	3.753	VB S	0.0197	2.04603e4	1.61989e4	23.97041
7	3.919	BV	0.0196	71.10494	56.98746	0.08330

Sample Name: VETIVER HAITI (BMV)

Peak #	RetTime [min]	Type	Width [min]	Area [pA*s]	Height [pA]	Area %
8	3.991	VB S	0.0210	7881.97266	5764.51367	9.23419
9	4.211	BB	0.0225	4.13541	2.92150	0.00484
10	4.317	BB	0.0236	1155.32935	767.17975	1.35354
11	4.429	BB	0.0300	7.92049	3.85527	0.00928
12	14.959	BB	0.0467	17.73281	5.78832	0.02078
13	15.696	BB	0.0445	439.31094	153.06378	0.51468
14	15.830	BB	0.0510	16.43392	4.91717	0.01925
15	17.121	BB	0.0458	405.95978	140.00899	0.47561
16	18.680	BB	0.0453	287.23322	97.59910	0.33651
17	18.886	BB	0.0453	185.55383	63.08268	0.21739
18	19.290	BB	0.0490	30.93035	9.74068	0.03624
19	20.467	BB	0.0494	11.34900	3.63762	0.01330
20	20.950	BB	0.0480	265.30429	85.94362	0.31082
21	21.339	BB	0.0484	7.98335	2.55798	0.00935
22	21.866	BV	0.0463	9.57987	3.25593	0.01122
23	22.079	VV	0.0662	5014.19434	1004.33832	5.87442
24	22.227	VB	0.0618	26.55757	5.97677	0.03111
25	22.586	BV	0.0441	6.12088	2.22797	0.00717
26	22.725	VB	0.0545	84.03382	23.04298	0.09845
27	22.934	BB	0.0460	107.70123	35.92060	0.12618
28	23.093	BV	0.0480	19.43877	6.13761	0.02277
29	23.223	VV	0.0519	84.67686	24.14856	0.09920
30	23.318	VV	0.0417	31.38271	11.19582	0.03677
31	23.391	VV	0.0503	166.67487	50.72242	0.19527
32	23.520	VV	0.0471	12.41115	4.11982	0.01454
33	23.605	VV	0.0516	92.95028	28.12107	0.10890
34	23.862	VV	0.0511	2842.43335	787.39038	3.33008
35	23.945	VV	0.0457	160.33632	52.35619	0.18784
36	24.082	VV	0.0502	78.69533	24.02843	0.09220
37	24.156	VB	0.0614	28.82500	6.30076	0.03377
38	24.282	BV	0.0490	17.99077	5.37871	0.02108
39	24.352	VV	0.0507	23.97357	7.03669	0.02809
40	24.439	VV	0.0562	76.28517	19.71076	0.08937
41	24.653	VV	0.0838	151.03981	24.55070	0.17695
42	24.790	VV	0.0590	88.91202	22.08060	0.10417
43	24.912	VV	0.0910	255.51889	37.73133	0.29936
44	25.105	VV	0.0512	525.30151	160.36002	0.61542
45	25.258	VV	0.0801	69.05956	11.33324	0.08091
46	25.355	VV	0.0461	233.55518	77.68213	0.27362
47	25.401	VV	0.0473	242.75021	77.93463	0.28440
48	25.509	VV	0.0528	119.52210	34.20578	0.14003
49	25.652	VV	0.0572	269.71246	69.57988	0.31598
50	25.714	VV	0.0365	78.64978	32.15623	0.09214
51	25.790	VV	0.0580	237.07860	61.52731	0.27775
52	25.963	VV	0.0647	3910.12476	819.56305	4.58094
53	26.079	VV	0.0567	91.16280	24.92825	0.10680
54	26.182	VV	0.0650	132.09543	31.43978	0.15476
55	26.273	VV	0.0496	54.44862	16.47437	0.06379
56	26.367	VV	0.0497	29.27082	8.83390	0.03429
57	26.439	VV	0.0472	29.42345	8.98007	0.03447
58	26.526	VV	0.0563	139.57768	37.56937	0.16352
59	26.673	VV	0.0498	173.37410	52.10940	0.20312
60	26.873	VV	0.0602	143.21907	34.68507	0.16779
61	27.018	VV	0.0511	92.53967	26.92695	0.10842

Sample Name: VETIVER HAITI (BMV)

Peak #	RetTime [min]	Type	Width [min]	Area [pA*s]	Height [pA]	Area %
62	27.140	VV	0.0660	62.51900	13.26967	0.07324
63	27.217	VV	0.0425	46.65274	16.23683	0.05466
64	27.294	VV	0.0508	239.73074	72.09203	0.28086
65	27.466	VV	0.0595	116.15877	30.45675	0.13609
66	27.725	VV	0.1409	92.67353	8.26115	0.10857
67	28.068	VV	0.0654	86.15015	18.82687	0.10093
68	28.206	VV	0.0862	59.79284	9.39697	0.07005
69	28.567	VV	0.0666	5319.01953	1077.57739	6.23154
70	28.739	VV	0.0763	98.31973	17.05498	0.11519
71	28.863	VV	0.0971	127.10045	17.02779	0.14891
72	29.080	VV	0.0542	831.14111	229.60956	0.97373
73	29.263	VV	0.0973	86.23712	11.92856	0.10103
74	29.376	VV	0.0665	70.78730	16.04975	0.08293
75	29.518	VV	0.0523	290.12921	81.91982	0.33990
76	29.571	VV	0.0517	376.17914	100.44406	0.44072
77	29.682	VV	0.0568	65.01212	16.57031	0.07617
78	29.779	VV	0.0645	128.79822	29.77454	0.15089
79	29.886	VV	0.0738	97.75786	18.15874	0.11453
80	30.013	VV	0.0727	102.22961	20.67743	0.11977
81	30.205	VV	0.1151	164.53946	18.09373	0.19277
82	30.325	VV	0.0754	327.87863	62.28034	0.38413
83	30.526	VV	0.0656	263.63074	59.58000	0.30886
84	30.734	VV	0.0731	175.12669	33.41917	0.20517
85	30.848	VV	0.0873	237.94788	36.36326	0.27877
86	30.984	VV	0.0613	82.66927	20.39978	0.09685
87	31.061	VV	0.0553	73.71478	18.98853	0.08636
88	31.147	VV	0.1085	217.09802	25.98933	0.25434
89	31.385	VV	0.0864	150.88127	24.32081	0.17677
90	31.520	VV	0.0741	388.93683	74.28856	0.45566
91	31.775	VV	0.0602	751.10522	181.94501	0.87996
92	31.923	VV	0.0594	239.71310	58.95935	0.28084
93	32.141	VV	0.0674	5379.53564	1093.76355	6.30244
94	32.312	VV	0.0600	1124.35229	257.29950	1.31724
95	32.505	VV	0.1188	652.89825	68.77535	0.76491
96	32.704	VV	0.0841	220.13246	33.32699	0.25790
97	32.985	VV	0.1184	1290.63098	135.18857	1.51205
98	33.057	VV	0.0511	212.39951	61.73427	0.24884
99	33.209	VV	0.0878	1465.82288	228.66002	1.71730
100	33.284	VV	0.0439	599.35376	200.26547	0.70218
101	33.315	VV	0.0442	504.67642	190.24275	0.59126
102	33.397	VV	0.0692	611.31738	124.77924	0.71619
103	33.589	VV	0.0739	584.50952	100.47624	0.68479
104	33.658	VV	0.0541	477.87216	129.24803	0.55986
105	33.759	VV	0.0577	779.21710	203.32419	0.91290
106	33.919	VV	0.0615	100.65238	23.23079	0.11792
107	34.035	VV	0.0886	225.75397	31.89609	0.26448
108	34.170	VV	0.0815	182.67839	29.40619	0.21402
109	34.295	VV	0.0822	245.72173	40.86143	0.28788
110	34.402	VV	0.0559	322.76544	85.86052	0.37814
111	34.492	VV	0.0687	392.21713	83.63568	0.45951
112	34.582	VV	0.1006	238.91928	30.75575	0.27991
113	34.877	VV	0.0738	58.21835	11.56064	0.06821
114	34.992	VV	0.0690	139.09055	28.98378	0.16295
115	35.182	VV	0.0604	29.68068	7.00571	0.03477

Sample Name: VETIVER HAITI (BMV)

Peak #	RetTime [min]	Type	Width [min]	Area [pA*s]	Height [pA]	Area %
116	35.320	VV	0.0790	28.19498	4.84036	0.03303
117	35.520	VV	0.0927	125.67909	17.72585	0.14724
118	35.832	VV	0.0915	56.15110	8.24491	0.06578
119	36.069	VV	0.0677	33.14712	7.62863	0.03883
120	36.171	VV	0.0579	16.95123	4.12711	0.01986
121	36.294	VV	0.0545	25.89196	7.10638	0.03033
122	36.480	VB	0.0671	20.45780	4.33507	0.02397
123	36.927	BB	0.0441	5.31193	1.93206	0.00622
124	37.947	BB	0.0470	6.75791	2.31769	0.00792

Totals : 8.53564e4 4.15089e4

=====
*** End of Report ***